



# May 2022

## Media

Boating Business UK Online  
BoatTEST eNews  
Canoes.cc Online  
Ocean Magazine AU eNews  
Ocean Magazine AU Online  
Powerboat World eNews  
Powerboat World Online  
Top Cruise Destinations Online

## Context

Dockmate SoftDocking  
Dockmate RED  
Dockmate Mention  
DockControl 2  
DockControl 2  
DockControl 2  
DockControl 2  
Dockmate Mention

## Links

[Link](#)  
[Link](#)  
[Link](#)  
N/A  
[Link](#)  
N/A  
[Link](#)  
[Link](#)



## NEWS

# New functionality from Dockmate

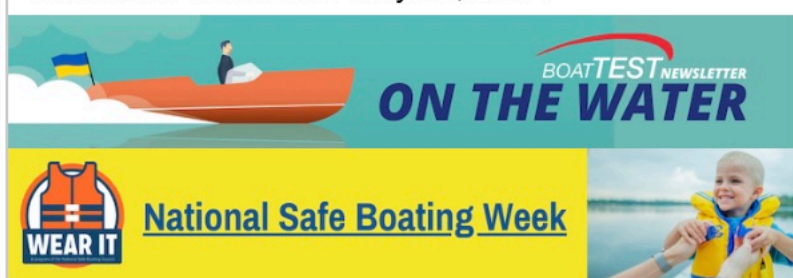
05/01/2022

**Dockmate, manufacturer of wireless remote-control systems for yachts, has launched SoftDocking functionality technology.**



THIS IS PREMIUM CONTENT

Already a member? [SIGN IN](#) now



## New Video

### Horizon PC60 Large, Luxury Power Cat



The Horizon PC60 is a power catamaran laid out to entertain a crowd in multiple gathering areas for a dockside cocktail reception or pamper the owning couple and four guests during a cruise. Her galley is well outfitted, including a full-sized refrigerator/freezer and the attention to detail throughout the boat is outstanding. Belowdecks, the master stateroom covers 105 sq. ft. (9.75 sq. m) and the VIP and guest staterooms all have en suite heads. [More...](#)

[Watch Our New Video](#)

[Builder's Website](#)

## Sponsored Content

### Dockmate Enjoy the Many Benefits of a Wireless Remote Control System and Save Now



Dockmate is now offering special Memorial Day pricing on their new RED remote control for the budget-minded and on all other models.

Simple, plug n' play installations with a sea trial to customize the settings to your specific needs are typically done in less than a day, and in many cases, just a few hours.

Start handling your boat today with confidence and safety in close quarters such as common marina slips and locks. Make it easy to recover your anchor and pick up a mooring ball. [More...](#)

[Dockmate Website](#)





Default Welcome msg!

Currency USD ▾ Language English ▾

HOME BOATS CANOES KAYAKS LIFE JACKETS & VESTS MARINE SUPPLIES STAND UP PADDLE BOARDS



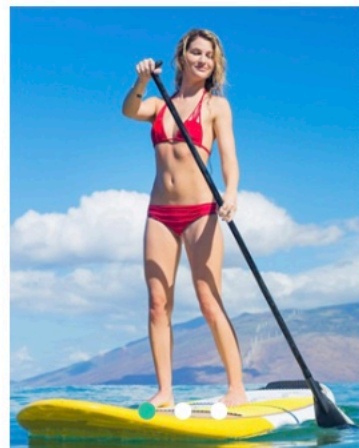
TOWABLES TUBES TROLLING MOTORS WAKEBOARDING WATER TRAMPOLINES

News

## CATEGORIES

SHOP >

BRANDS >



## REVIEWS

There are currently no product reviews.

VIEW MORE

## SEARCH

SEARCH

Advanced Search

## MANUFACTURERS

Bradley  
BRIS  
BSMEAN  
BZ Proboards  
Camping Surviva..  
Coleman PowerSp..  
Connelly  
Cooyes  
Costway  
Custom X

## NEWS

17  
May

### RATING THE BEST REMOTE CONTROL BOATS OF 2022

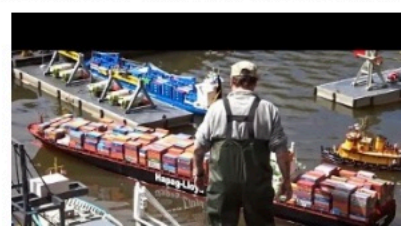
Updated On : **May 17, 2022**



We consider the Traxxas Spartan the best remote control boat of 2021. However, there's really no objective answer to this question. A brushless RC boat will have more power as opposed to a brushed model, which means it can go faster and reach some serious speeds on the water. Also look for RC boats that have a low-battery alarm as well. While driving a boat on a lake will allow you find a boat that has a longer battery life, you won't want the battery to run out while it's far away from you. These features help you keep control of RC lake boat so you can have an enjoyable driving experience.



All of these features help the remote control boat function to its maximum and safest potential. The motor of this remote control boat is more rugged and tough than the rest. The high-speed motor is magnetic and twice as strong as the motors that are typically used in remote control boats. This means the boat can power over waves, wake, and strong currents easily without resistance. Safety is a huge thing to consider when looking at fast RC boats. Altair has included a balance charger with this boat, a much-needed upgrade from the AA102. The balance charger helps maintain your battery's health by not overcharging it and making sure that each cell in the battery is charged at the proper rate. The battery itself, well, it only gets about 8 minutes per charge, so I'll probably add another one shortly. Gas-powered RC boats are typically larger due to the engine size, and offer increased realism, including smoke and noise of a gas-powered engine. Electric RC boats use two types of electric motors – brushed and brushless. Electric RC boats are easier to get up and running and they are quieter and cleaner than gas RC boats. Ready-to-run speedboats from AquaCraft, ProBoat and OffshoreElectrics can reach speeds over 40 mph out of the box and with modifications can reach well into the mph range. These types of boats are referred to as "hobby grade" and can be found only at hobby shops and retailers. "Toy grade" boats which are obtained through mass consumer retailers, are generally much slower and their maximum speeds are usually less than 15 mph. Its top speed is 30/kmh or 19mph, and it has a 390 brushed motor. The hull is designed not to capsize so that it can be used in pools, lakes, and creeks. When the boat flips over, turn the wheel of the remote control to flip it back over.







Whichever design you opt for, ensure the color is bright so that your boat is easy to spot at a distance. Losing control of your boat can be costly and even dangerous. If you are upgrading for more power, do it in stages so you don't end up with too much to control. Do you want a cool-looking RC boat that can be run during the night? The Force1 Velocity, UDIRC Venom, and anything made by Traxxas are great RC boats for rough water. That's why we have broken this list of best electric RC boats into several categories – it lets you, the reader, find the boat that works best for you specifically. Plus, it can be used at night thanks to LED lights, and it's nearly silent, which is ideal for when you're chumming the water with bait. This is definitely not what you think of when you think of a typical RC pontoon boat, because it only has a single large buoyancy pontoon instead of two smaller ones. However, the HuntGold Electric Bait Fishing Ship is one of the very best RC boats for lakes in its class. This is the Traxxas Power Cell 11.1V 6400mAh 25C 3S iD LiPo Battery with iD Connector. Especially for boats that are on the smaller side, you need to keep in mind that fuel takes up mass on board the craft. As you use up more fuel, it will change the weight distribution of the boat and affect its balance, steering, speed, and how it reacts to wind or waves. Bill Oxidean has broken over 100 Straight line Speed records and won over 50 national titles. The new XENTA Remote Control is the first brand integrated wireless push button device designed to maneuver the boat traditionally. Adding a remote to your system can provide dedicated steering controls for your fully integrated autopilot system, complementing the touchscreen controls on your multifunction ... Like the SHARKOOL H106, the SZJJX RC Boat comes with a low battery warning at the 1-minute mark, giving kids enough time to prep themselves for the next race. For example, a smartphone application won't do you any good if the boat you have chosen is not equipped to power through strong currents or waves. An additional remote control unit, MYW868BE, can also be ... We made maneuvering your boat even more responsive with the Dockmate TWIN control. The remote controls the gearbox of each engine plus the bow- and stern thrusters. With a radio control installed you will have full control of windlass operation wherever you are on ... All of these features allow the boat to cruise and not wobble or shift on choppy waters without overturning or stalling. We're shaking up the industry with top quality R/C racing boats and equipment. Remote control boats that have additional accessories may include upgraded battery packs, smartphone application, or additional propellers. Finally, it is waterproof with an anti-water design that blocks water from getting into the electronic components inside. This boosts its longevity and allows you and your family to play with it for longer. Pro Boat is renowned for its high quality and excellent value RC boats, and the Stealthwake is no exception.



## Gear 'n' Gadgets



2



### 1. MERCURY 1ST MATE

Mercury Marine's 1st Mate Marine Safety and Security System uses wearable fobs and your mobile device to combine boat safety with convenience. The fobs (captain and up to seven passengers) connect to a mobile device. If the captain falls overboard, the engine stops, an alarm sounds and alerts are sent via the 1st Mate mobile app. If a passenger falls overboard, the captain is alerted and given the passenger's GPS location via the app. The Theft Deterrent System locks the engine to prevent unauthorised use when the captain fob isn't in the vicinity. 1st Mate is compatible with a range of Mercury SmartCraft engines. [mercurymarine.com](http://mercurymarine.com)

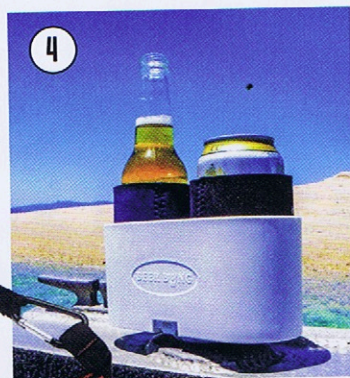
### 2. SIMRAD NSX

Simrad Yachting says it has redefined what a chartplotter and fishfinder can be with the launch of Simrad NSX, an innovative, modern interface featuring powerful navigation capability with C-MAP support.

Features include integrated sonar, full radar and autopilot systems compatibility, and a setup wizard that'll quickly get users up and running. Available in 7, 9 and 12in touchscreens with multiple screen configurations. RRP: NSX 3007 \$2199; NSX 3009 \$2749; NSX 3012 \$4999. These items include Active Imaging and AUS/NZ Chart. [simrad-yachting.com/nsx](http://simrad-yachting.com/nsx)

### 3. RAYMARINE YACHTSENSE ECOSYSTEM

The YachtSense Ecosystem is an onboard and remote-monitoring solution that gives boaters control of their Raymarine equipment and vessel systems from a mobile device. It operates through the Raymarine mobile app and is enabled by the new YachtSense Link marine mobile router linking through 4G/LTE broadband, local Wi-Fi networks, and seamless integration with Raymarine devices. With the Raymarine app and YachtSense Link, boaters can remotely monitor critical onboard systems, control electrical devices, and sync with Raymarine navigation systems. [raymarine.com.au](http://raymarine.com.au)



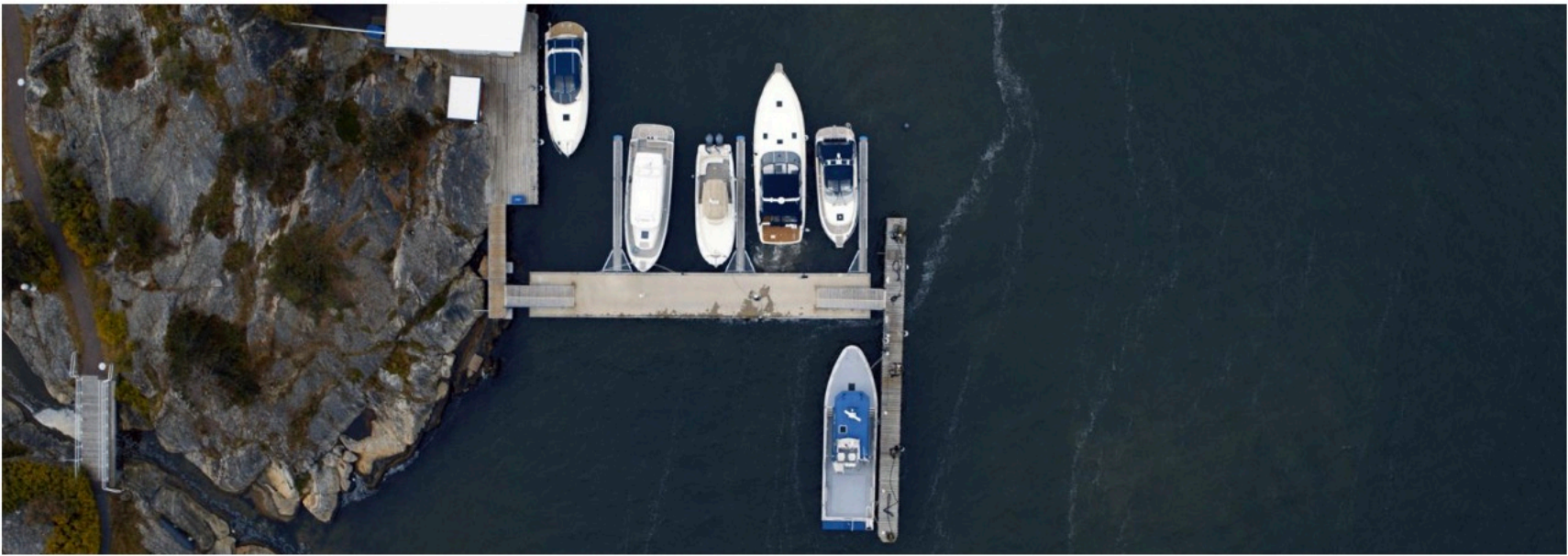
### 4. BEER BUNG

Boaters looking for a drinkholder that'll keep their beverages cool and secure while underway might be interested in a Beer Bung. This innovative product is suitable for boats and jetskis that have a 30-degree angled rodholder, the Beer Bung's rod extending into the holder to keep it secure. Made of tough, weather-resistant polypropylene, it suits a range of different drink types, and even floats if dropped in the water. Beer Bung-branded stubby holders are also available. Beer Bung RRP: \$24.95. [beerbung.com.au](http://beerbung.com.au)

### 5. DOCKMATE RED

Dockmate's new Dockmate RED remote docking solution is for boats with the most common analogue controls of engines and thrusters, and is offered in single or twin configurations. It includes analogue idle speed engine modules, and on/off thruster modules with an optional anchor control module. The device measures 70x150x40mm, weighs 150g and has a 50m range. The remote is IP67 waterproof rated, its battery life lasting for up to 15 docking manoeuvres of around 10 minutes each before needing to be recharged. [dockmate.eu](http://dockmate.eu)





[◀ Back to article page](#)

Latest Dockmate debuts

Dockmate® unveils new software communicating between its remotes, receiver and all programmable interfaces and modules with the launch of DockControl2™.

Subscribe now.

Only \$89.95\* for 1 year delivered to your door.

For Australian subscriptions only.

Advertisement

With a complete re-write of its dealer-facing Windows app and the entire software stack within the system, DockControl2 allows for a common foundation for different apps used to interface with host systems. This includes systems such as Volvo Penta’s TJS Gateway, Glendinning’s CC1, Vetus’ V-CAN and Sleipner’s S-Link.

In addition, the software improves existing features, adding fail safes and extending Dockmate’s proprietary wireless communication DockLink2™ protocol.

The new common software foundation also makes current and future integration projects with engine, motor and thruster controls easier and faster to implement and test.

For users, the software update allows for features like Throttle+ functionality and a more precise SoftDocking feature. It also creates static error codes, which display on the wireless remote to help dealers diagnose issues.

For dealers, Dockmate has built a new Wireless Programmer dongle that lets dealers change settings, calibrate throttle and update the Dockmate system without the need to open the device or dashboard.



OCEAN ALEXANDER 28E

Advertisement





*Dockmate has built a new Wireless Programmer dongle that lets dealers change settings, calibrate throttle and update the Dockmate system.*

“While older Dockmate systems using DockControl1™ provide incredible functionality for the user and a customisability that no other aftermarket product on the market can achieve, any updates or calibration require a dealer to physically connect a cable to every component,” said Dirk Illegems, president of Dockmate.

“In our continuing effort to provide the best system and value, dealers can now do everything wirelessly, making maintenance and installs even easier. This not only saves the dealer time, but also ultimately saves the owner money.”

To give users flexibility and control to operate their vessels in almost any situation or conditions, Throttle+ offers a predetermined additional boost of throttle on every SINGLE+, TWIN+ and TWIST Dockmate remote control.

Building on the recent release of Dockmate’s patented SoftDocking feature, every Dockmate can now have three levels of engine control.

On SINGLE+ and TWIN+ models, a quick tap of the forward or reverse button gives a pre-programmed rotation of the prop, called SoftDocking, for close quarters manoeuvring.

---

“ A full press of the forward or reverse buttons engage idle power and by pressing the SEL button, while pressing either forward or reverse, gives a pre-programmed boost of Throttle+.

---

The predetermined amount of throttle can be calibrated per direction to fit the precise needs of each customer and the type of vessel they own.




On a TWIST (joystick) remote, there's no need to press the SEL button to use Throttle+. Instead, Dockmate uses the proportional nature of the TWIST joystick, allowing users to tap the joystick for SoftDocking.

A full push of the joystick in any direction forward, reverse or diagonal allows for idle speed. By pushing the joystick further over the Throttle+ threshold engages additional thrust.

SoftDocking and Throttle+ are pre-loaded on all new Dockmate controls and are configured during installation.

**dockmate.com**

**From:** OceanLIVE <[enews@oceanmedia.com.au](mailto:enews@oceanmedia.com.au)>  
**Subject:** SCIBS 2022 hits a high note | Australian SilverCat series expands   
**Date:** May 27, 2022 at 3:53:24 AM EDT  
**To:** Valued Ocean <[rgraham@rushtongregory.com](mailto:rgraham@rushtongregory.com)>  
**Reply-To:** <[us4-c79489210a-0461903c53@inbound.mailchimpapp.net](mailto:us4-c79489210a-0461903c53@inbound.mailchimpapp.net)>

[view this email in your web browser](#) | [forward this email to a friend](#)

BECAUSE...  
YOUR ADVENTURE STARTS  
WITH PEACE OF MIND

  
PANTAENIUS  
SAIL & MOTOR YACHT INSURANCE

[f](#) | [t](#) | [i](#)

ocean

[CURRENT ISSUE](#)   [LIVE NEWS](#)   [ABOUT US](#)   [CONTACT US](#)



### Editor’s note

*The Sanctuary Cove International Boat Show proved yet again why it is one of the leading boat shows in our region.*

It has been a huge week of recovery after the 33rd Sanctuary Cove International Boat Show came to a close last Sunday. Even with the rain over the weekend, which did see a reduction in visitation compared to previous years, most exhibitors expressed the four days were positive and were pleased with the calibre of visitors.

[Our coverage of the show has only just begun.](#) Over the next few weeks, we'll be bringing you all the insider insight from the industry leaders interviewed on OceanTV, plus the highlights of the Ocean Owners' Coterie held on the opening night of the show.


This week, we cover some of the launches and new products presented at SCIBS, including the [head-turning Ocean Alexander 28 Explorer](#) represented by Alexander Marine Australia, who hosted the global premiere of this world-roaming motor yacht. Also covered are the pre-boat show events, including [ASMEX](#) and the annual [Rivergate dinner](#).

Riviera went all out at SCIBS, too, [holding their exclusive Festival of Boating for owners and revealing three new models](#), including the flagship 78 Motor Yacht, the 4600 Sport Yacht Platinum Edition and the reveal of the new 465 SUV model.

In other news, fantastic progress in the [Pacific with the announcement that New Zealand, Tahiti, Fiji and Australia](#) are now open to superyacht visitation, which will be welcomed by shipyards, marinas and marine businesses all over the region.

And finally, new vessels launched from European yards Ferretti and Oceanco as well as an assortment of covetable gear and gadgets, [including the latest from Dockmate](#) and VETUS-Maxwell.

Issue #101 of *Ocean* is out now; don't miss it. [Subscribe here to read your copy online or get your print edition delivered directly to your door.](#)

See you on the water! 

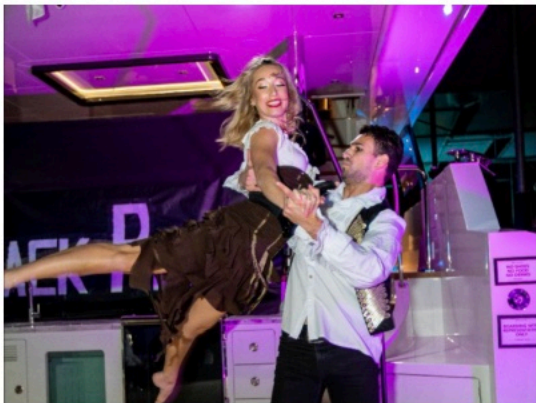
Hillary Buckman  
Managing Director and Editor-in-Chief  
Ocean Media



# SCIBS 2022 in review

Exhibitors report genuine buyers were undeterred by inclement weather and the 33rd annual Sanctuary Cove International Boat Show resulted in strong sales, promising leads and reinforced bonds within the industry.

READ MORE



New build

## A night to remember

Alexander Marine Australia hosted the launch of the Ocean Alexander 28 Explorer at the Sanctuary Cove International Boat Show. ➤



Company

## Riviera celebrates with owners

In addition to three premieres, Riviera celebrated 42 years of boatbuilding with owners at the Riviera Festival of Boating. ➤



Regional

## South Pacific open to yachts

The South Pacific region, including New Zealand, Tahiti, Fiji and Australia, open to superyachts after procedures approved. ➤







*Destinations*

### Lesser-known Italy

Heading back to Europe soon?  
It's time to explore Italy's  
underrated gems. [➤](#)



*Destinations*

### Kimberley luxury

Explore Western Australia with  
Walk Into Luxury's Signature  
Kimberley Walk. [➤](#)



*Destinations*

### Turkey wine tours

Discover the world of Turkish  
vineyards and vintages with  
Amanruya. [➤](#)



*Company*

### Schaefer Yachts Down Under

Schaefer Yachts of Fort Lauderdale in the US has  
made it to our shores with the launch of Schaefer  
Yachts Australia. [➤](#)



*Technology*

### Dockmate debut

Dockmate® unveils new  
software with the launch of  
DockControl2™. [➤](#)



*New build*

### Super news

Riva's Corsaro Super is a  
flybridge yacht with a complete  
design rethink. [➤](#)



*Technology*

### E-LINE demos

VETUS-Maxwell demonstrated  
its latest electric option at  
SCIBS. [➤](#)



*Emporium*

### C-Type tribute

Bremont extends its motor  
sport collection with the Jaguar  
C-Type watch. [➤](#)



*Industry*

### Rivergate and AIMEX reconnect

At their annual VIP dinner, Rivergate Marina & Shipyard,  
together with AIMEX, welcomed industry guests as well as  
speakers from the ASMEX Conference and the media. [➤](#)





## The Jacksons with Milli Vanilli. - Powerboat.world newsletter

25/05/2022

**powerboat**  
world  
*The Jacksons with Milli Vanilli.*

COMING  
2022.



*Martimo.*  
LEARN MORE >

**SHOCK-WBV**  
SHOCK MITIGATING PRODUCTS  
[WWW.SHOCK-WBV.COM](http://WWW.SHOCK-WBV.COM)



SUSPENSION UNITS FOR  
ALL POWER BOATS &  
SEATING TYPES



*Pardo 38 was proud and majestic, despite the weather... - photo © John Curnow*

Dear Recipient Name

Weird and scary thing is, they'd probably sell tickets to that concert...

Anyway, for us there was no moonlight, maybe some boogie,  
certainly a few good times, but definitely no sunshine. So accordingly  
then, we'll just have to, [Blame it on the rain](#).



*Open spaces and walk around decks - Pardo 38 - photo © eyachts*

The distinct lack of suitable and amenable weather for the 2022 iteration of the Sanctuary Cove show all conspired to make me think a lot about day boating. You know, maximise the opportunity, keep it easy, skedaddle out and have fun, blast back in, hose off, lock up, and you're gone. All the gang, no need to cart around more than is needed, a bathroom, tunes, screens, connectivity, fish if you can, cook it when you land it, fridges loaded with good times - you got the picture.





**Versatile and dependable power cruiser Hylas M49 set for American debut**

The Hylas M49 is set to make its stateside debut this summer—an introduction that has been met with great anticipation by American boaters thanks to the global success of the Hylas M44.



**Riva 102' Corsaro Super launched**

Riva confirms its extraordinary creative vitality and incomparable style by launching the new 102' Corsaro Super, a dazzlingly beautiful flybridge yacht with a completely rethought design and spaces to enjoy in comfort and conviviality.



**The Italian Sea Group: Delivery of the M/Y Tecnomar EVO 120 that was launched last December**

Tecnomar a brand of The Italian Sea Group, global operator in the luxury yachting industry, first Italian builder of super-yachts over 50 metres, announces the delivery of the EVO120 motor-yacht.



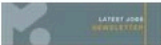
**Sergio Davi departing Mexico headed for the finish**

Captain Sergio Davi, the Italian seafarer who left Palermo, Italy in mid-December on his 11-meter (36-foot) rubber inflatable boat (RIB) headed for Los Angeles, is nearing the finish of his Ocean to Ocean RIB Adventure.



**Dockmate re-writes software & releases wireless connectivity for easier installation and maintenance**

Dockmate® announced today new software communicating between its remotes, receiver and all programmable interfaces and modules for greater flexibility and ease for the installer and more functionality for users with the launch of DockControl2™.



**Marine Resources: Don't let your career goals slip away!**

New careers and job transitions can be confusing and overwhelming a lot of the time. It's hard to find the perfect balance between work, fun and life, we all get that feeling.



**Denison Yachting unveils 3 key features onboard the new Alpha Spritz 116**

Yacht enthusiasts may or may not be familiar with the shipbuilder Alpha Custom Yachts, a family-owned company recognized for its elegant, unique, and innovative vessels.



**Maritimo M600 - O is for...**

Oh Yeah! All right. All right. All right. It's actually offshore, as in Maritimo M600 Offshore Flybridge Motor Yacht, but after time on board in real world conditions, I actually reckon my version is bang on.



**Nauta Design and Wider come together to build the Moonflower 72 hybrid superyacht project**

Today Nauta and Wider are very pleased to announce the start of the construction of the Moonflower 72 project, an innovative superyacht equipped with latest generation of the Wider hybrid propulsion system, a trademark of the leading yacht builder.



**Will hurricane season be starting earlier? Let BoatUS help you prepare your boat now**

No, you're not going crazy. The current six-month Atlantic Hurricane Season, set in 1965, begins June 1 and runs through November 30.



**Introducing the first Capoforte SQ240i with electric propulsion**

After the successful debut of the SX200 at the last Cannes Yachting Festival, Capoforte is preparing for another first... in the world of electric propulsion.



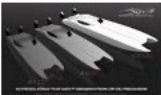
**CRN delivers the M/Y RIO Superyacht**

The M/Y RIO superyacht, the latest fully custom steel and aluminium work of art by CRN, has been successfully delivered to her owner.



**The pinnacle of pairings**

The 40X and a top rosé Champagne are birds of a feather: both stylish bastions of good taste while also undeniably primed for fun. Their luxurious auras belie their ability to generate goosebumps in the enthusiast.



**Marine Technology Inc announces new 440X catamaran**

We have very exciting news here at MTI! Our third model in the outboard-powered catamaran line-up is set to make a debut early 2023.



From: "Powerboat.World" <[noreply@sail-world.net](mailto:noreply@sail-world.net)>  
Subject: **The Jacksons with Milli Vanilli. - Powerboat.world newsletter**  
Date: May 25, 2022 at 12:28:41 PM EDT  
To: [rgraham@rushtongregory.com](mailto:rgraham@rushtongregory.com)

Having trouble viewing this email? [View it as a web page](#)

# powerboat world

*The Jacksons with Milli Vanilli.*

COMING  
2022.



*Martimo.*  
LEARN MORE >

**SHOCK-WBV**  
SHOCK MITIGATING PRODUCTS  
[WWW.SHOCK-WBV.COM](http://WWW.SHOCK-WBV.COM)



SUSPENSION UNITS FOR  
ALL POWER BOATS &  
SEATING TYPES



[Pardo 38 was proud and majestic, despite the weather... - photo © John Curnow](#)

Dear Rus Graham

**Weird and scary thing is, they'd probably sell tickets to that concert...**

**Anyway, for us there was no moonlight, maybe some boogie, certainly a few good times, but definitely no sunshine. So accordingly then, we'll just have to, [Blame it on the rain.](#)**





**Versatile and dependable power cruiser Hylas M49 set for American debut**  
The Hylas M49 is set to make its stateside debut this summer—an introduction that has been met with great anticipation by American boaters thanks to the global success of the Hylas M44.

---



**Riva 102' Corsaro Super launched**  
Riva confirms its extraordinary creative vitality and incomparable style by launching the new 102' Corsaro Super, a dazzlingly beautiful flybridge yacht with a completely rethought design and spaces to enjoy in comfort and conviviality.

---



**The Italian Sea Group: Delivery of the M/Y Tecnomar EVO 120 that was launched last December**  
Tecnomar a brand of The Italian Sea Group, global operator in the luxury yachting industry, first Italian builder of super-yachts over 50 metres, announces the delivery of the EVO120 motor-yacht.

---



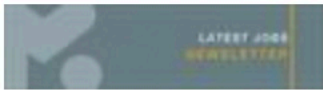
**Sergio Davì departing Mexico headed for the finish**  
Captain Sergio Davì, the Italian seafarer who left Palermo, Italy in mid-December on his 11-meter (36-foot) rubber inflatable boat (RIB) headed for Los Angeles, is nearing the finish of his Ocean to Ocean RIB Adventure.

---



**Dockmate re-writes software & releases wireless connectivity for easier installation and maintenance**  
Dockmate® announced today new software communicating between its remotes, receiver and all programmable interfaces and modules for greater flexibility and ease for the installer and more functionality for users with the launch of DockControl2™.

---



**Marine Resources: Don't let your career goals slip away!**  
New careers and job transitions can be confusing and overwhelming a lot of the time. It's hard to find the perfect balance between work, fun and life, we all get that feeling.

---



**Denison Yachting unveils 3 key features onboard the new Alpha Spritz 116**  
Yacht enthusiasts may or may not be familiar with the shipbuilder Alpha Custom Yachts, a family-owned company recognized for its elegant, unique, and innovative vessels.

---



**Maritimo M600 - O is for...**  
Oh Yeah! All right. All right. All right. It's actually offshore, as in Maritimo M600 Offshore Flybridge Motor Yacht, but after time on board in real world conditions, I actually reckon my version is bang on.

---



**Nauta Design and Wider come together to build the Moonflower 72 hybrid superyacht project**  
Today Nauta and Wider are very pleased to announce the start of the construction of the Moonflower 72 project, an innovative superyacht equipped with latest generation of the Wider hybrid propulsion system, a trademark of the leading yacht builder.

---



**Will hurricane season be starting earlier? Let BoatUS help you prepare your boat now**  
No, you're not going crazy. The current six-month Atlantic Hurricane Season, set in 1965, begins June 1 and runs through November 30.

---





Search



**powerboat**  
world

**SHOCK-WBV**  
SHOCK MITIGATING PRODUCTS  
[WWW.SHOCK-WBV.COM](http://WWW.SHOCK-WBV.COM)



SUSPENSION UNITS FOR  
ALL POWER BOATS &  
SEATING TYPES

HOME | EDITORIAL | CLUBS | PHOTOS | PARTNERS | JOBS | NEWSLETTERS | SUBMIT NEWS  
| CONTACT

## Dockmate re-writes software & releases wireless connectivity for easier installation and maintenance

by Dockmate 19 May 10:48 PDT



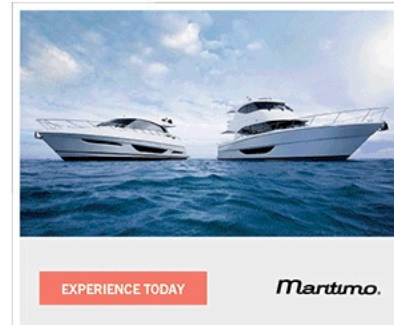
DockControl2 © Dockmate

**Dockmate®, manufacturer of advanced wireless remote control systems for yachts, announced today new software communicating between its remotes, receiver and all programmable interfaces and modules for greater flexibility and ease for the installer and more functionality for users with the launch of DockControl2™.**

A complete re-write of its dealer-facing Windows app and the entire software stack within the system, DockControl2 allows for a common foundation for the different apps used to interface with host systems like Volvo Penta's TJS Gateway and Glendinning's CC1, or Vetus' V-CAN and Sleipner's S-Link. In addition, the software improves existing features, while adding more fail safes and extending Dockmate's proprietary wireless communication DockLink2™ protocol. The new common software foundation also makes current and future integration projects with engine, motor and thruster controls easier and faster to implement and test.

For users, the software update allows for award-winning features like Throttle+ functionality, and a more precise SoftDocking feature. In addition, it creates static error codes displayed on the wireless remote to help dealers diagnose any issues that may arise. For dealers, Dockmate has built a new Wireless Programmer dongle that lets a dealer change settings, calibrate throttle and update the Dockmate system without the need to open the Dockmate device or even to open up the dashboard, saving time.

"While older Dockmate systems using DockControl1™ provide incredible functionality for the user and a customizability that no other aftermarket product on the market can achieve, any updates or calibration require a dealer to physically connect a cable to every component," said Dirk Illegems, president, Dockmate. "In our continuing effort to provide the best system and value, dealers can now do everything wirelessly, making maintenance and installs even easier. This not only saves the dealer time, but also ultimately saves the owner money."



Bring the joy of  
boating to more  
customers.

Try GetMyBoat for your  
boat rental business.

Learn More

GETMYBOAT



**SHOCK-WBV**  
SHOCK MITIGATING PRODUCTS



Sign up for our FREE



To give users the most flexibility and control to operate their vessels in almost any situation or conditions, Throttle+ offers a predetermined additional boost of throttle on every SINGLE+, TWIN+ and TWIST Dockmate remote control. Building on the recent release of Dockmate's patented SoftDocking feature, every Dockmate can now have three levels of engine control.

On SINGLE+ and TWIN+ models, a quick tap of the forward or reverse button gives a pre-programmed gentle rotation of the prop, called SoftDocking, for close quarters maneuvering; a full press of the forward or reverse buttons engages idle power; and by pressing the "SEL" button while pressing either forward or reverse gives a pre-programmed boost of additional throttle called Throttle+. This predetermined amount of throttle can be calibrated per direction to fit the precise needs of each customer and the type of vessel they own.

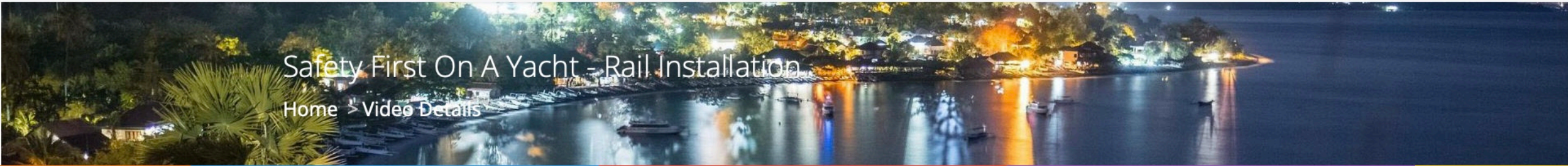
On a TWIST (joystick) remote there is no need to press the SEL button to use Throttle+. Instead Dockmate uses the proportional nature of the TWIST joystick, allowing users to tap the joystick for SoftDocking, a full push of the joystick in any direction forward, reverse or diagonal, for idle speed or by pushing the joystick further over the Throttle+ threshold to engage the additional thrust. SoftDocking and Throttle+ are pre-loaded on all new Dockmate controls and are configured during installation.

For more information on the next generation controls or Dockmate, please visit [dockmate.eu](http://dockmate.eu).





TOP CRUISE DESTINATIONS



Safety First On A Yacht - Rail Installation

Home > Video Details



Safety First On A Yacht - Rail Installation 191 View

Oscar Cameron FOLLOW

Share this Video

f t B d p t in m w e v

Publish... May 15, 2022  
Category: Liveaboard Yachting  
Video L... Standard License  
Import... Youtube

Tags

Since Safety comes first on a Yacht, we're completing a rail installation on our boat. We have a 48' Navigator yacht and it did not come with side rails. So we are having S3 Maritime install custom made side rails for our boat. This will make the boat safer to walk around and tend to fenders and lines while underway. They came out to our marina and measured and procured the material to match the original bow rails which is an inch and an eighth which is not a standard size. We are also having them put in a burgee stanchion on the bow since our boat did not come with one. While we are at it we are having them rebed the port side rails so it won't leak. We had the starboard side done last year when we had some work done and the boat is 12 years old and it should be done every 10 years. The put the rail up on the port side and measured where they were going to drill (Pro-tip: they tapped the holes and used

Search Here

Rocky Bottom Fisheries  
A Boat Tour You'll Remember  
Hands on Lobster fishing

Directions Website

MORE FROM THE AUTHOR

41:18 South Africa | Choose your best  
2,595 views  
2 days ago

8:29 Top 10 Beaches to Visit in Your Life  
246,550 views  
3 days ago

22:19 Mistakes to Avoid on Your 2022 Disney  
336,105 views



TOP CRUISE DESTINATIONS

- SIDE RAILS ON A YACHT
- BOAT REFIT
- SAFETY FIRST
- NORDHAVN
- NAVIGATOR YACHT
- BOATBOATS
- YACHTDOCKMATE
- DOCKMATE TWI
- DOCKMATE
- DOCKMATE WIRELESS CONTROLLER

machine screws so it does not crack the gel coat or fiberglass) and welded the new side rail to the original bow rail. Once the port side is done we used our Dockmate Twist to turn the boat around and they then installed the starboard side rail which went much faster. While we were at the dock we saw the largest Nordhavn ever built. It is a 120' Nordhavn the Aurora that was getting refitted. At the end of the day we were blessed with a beautiful rainbow before we headed back to our marina. At the end of the day it will be safer for us and the dog to walk around the boat!

Our favorite stuff from our videos can be found at

By using the link below, Dockmate is rewarding our subscribers with \$1000 off every wireless remote control system, free installation (\$995 value), Free All-Inclusive Pass to Boater's University (\$395 value) and 6 months same as cash financing.

Our favorite items in this Video:  
LUISLADDERS Aluminum Telescoping Ladder  
Telescopic Extension Ladder 330 Pound Capacity  
One-Button Retraction

Instagram @theelliyacht  
Facebook MV Elli-Yacht

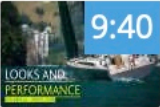
www.theelliyacht@gmail.com

- 0:00 Intro
- 0:51 Underway
- 2:39 New stanchion
- 5:19 New rail going up
- 9:52 Going in sideways with the Dockmate
- 11:57 120' Nordhavn
- 12:41 Review

S3 Maritime - Greg Allen, Sales Manager,  
GREG@S3MARITIME.COM

Note, as Affiliates, if you use the links above to purchase these products the Elli-Yacht may receive compensation that goes towards our production of

views  
4 days ago



On board the Solaris 40: a chic, 512 views 5 days ago

Rocky Bottom Fisheries

A Boat Tour You'll Remember

Hands on Lobster fishing

DirectionsWebsite

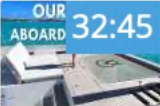
RECOMMENDED FOR YOU



On board the Solaris 40: a chic, 512 views 5 days ago



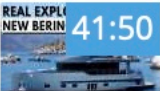
How To Stop Losing Shore Power 52 views 5 days ago



WELCOME ABOARD S/Y "VALENTINE' 6,339 views 6 days ago



How to Find & Clean Conch || 186 views 7 days ago



2022 BERING 70

← Ads by Google

Send feedback

Why this ad? ▶