

## April 2019

Media	Context	Link
All Boat Service Online (EU)	Next-Gen Wireless Docking System Dirk Interview	<a href="#">Link</a>
Ask Captain Chris (YouTube)	Sea Trial Demo Part 1	<a href="#">Link</a>
Ask Captain Chris (YouTube)	Sea Trial Demo Part 2	<a href="#">Link</a>
Auckland Boat Show Online (AU)	Ultraflex Engine Controls Integration	<a href="#">Link</a>
Boat Gold Coast Magazine (AU)	Wireless Remotes in Great Products for Boating	Print
Boating Business Online (EU)	Wireless Remote Control in Automated Docking is Not Just for Leisure Boats	<a href="#">Link</a>
Digital Journal Online	Next-Gen Wireless Docking System in Docking Made Easier	<a href="#">Link</a>
Docktor Boats Online	Next-Gen System in Life is Easier with a Remote Control	<a href="#">Link</a>
Great Lakes Boating (Facebook)	Next-Gen Docking System	<a href="#">Link</a>
Great Lakes Boating Online	Dockmate Expands Partnership with Vetus	<a href="#">Link</a>
IBI E-News (EU)	Dockmate Expands Partnership with Vetus	N/A
IBI Online (EU)	Dockmate Expands Partnership with Vetus	<a href="#">Link</a>
Lakeland Boating Magazine	Next-Gen Wireless Docking in Accessories	Print
Lakeland Boating Online	Next-Gen Docking System in Miami Boat Show Recap	<a href="#">Link</a>
Marine Business World Online	Dockmate Expands Partnership with Vetus	<a href="#">Link</a>
Marine Electronics Journal E-News	Wireless Docking in April Newsletter	N/A
Maritime Journal Online (EU)	Next-Gen Wireless Docking System in Automated Docking Isn't Just for Leisure Boats	<a href="#">Link</a>
NBC 2 Online	Wireless Remote Control in Making Docking Easier	<a href="#">Link</a>
Panbo (Facebook)	Next-Gen System in Life is Easier with a Remote Control	<a href="#">Link</a>
Panbo Online	Next-Gen System in Life is Easier with a Remote Control	<a href="#">Link</a>

## DOCKMATE, REMOTE CONTROL BOAT DOCKING TECH THAT DIRK BUILT

POSTED ON APRIL 3RD, 2019 | POSTED BY JOHN



A necessary indulgence, Dockmate is establishing itself within the marine community as one of the world's most future-proof remote control boat docking systems. We take a brief moment to look at the man behind those controls; how he engineered a global docking phenomenon in the face of adversity and how he has successfully steered Dockmate, with finger-tip precision, into such an enviable position.....

## **Dockmate: The remote control boat docking tech that Dirk built**

If necessity is the mother of invention, and play its Father, then Belgian entrepreneur Dirk Illegems had the perfect upbringing and lineage for creating a global phenomenon that simplifies boat docking. Today, Dirk sits at the helm of Dockmate, a future proof, wireless remote-control boat steering system with a distribution network across 31 countries.

Dirk, who has been a keen sailor since his teenage years and always adopted a hands-on approach to his own repairs, bought a new motorboat in 2011 in his late forties. When he started to look for a remote control to help dock it, he didn't realise it would be his own vision, business acumen and actual product which would later fulfil that need. "There was only one brand on the market that could possibly do the job, which was way too expensive for the old tech at its core. So, I said we can make this better. Let's start from scratch," explains Dirk in his perfect English. One year later, he had developed his first Dockmate prototype. "The whole marina came out to watch me test it on my own boat. No one would let me near theirs with it, back then!" he jokes.

Always an entrepreneur at heart, Dirk ran his own print finishing business for 25 years before selling it in 2006 to turn his hand at globally exporting graphic machines and manufacturing their electronic components from its base in Belgium. It was a chance encounter with his chief engineer, involved in creating remote controls used in coal mines, which led him on to apply the land-based solution to water, making his idea a reality and solving his own personal boat docking crisis in the process.

4 years on the market and Dockmate is one of its largest players but it hasn't been an easy journey as Dirk explains: "No bank was interested in the investment at Dockmate's start so, development of the product has been something I've had to self-finance. Perhaps, a couple of houses worth! At times the speed of bringing it to market has been very frustrating, to ensure we had the capacity to meet demand, but the slow start has ultimately worked in our favour, giving us the time to check, recheck and test at every stage.

Ironically, Dirk and his long term partner Sandra, rarely have the time to spend on their own boat and haven't had a holiday together in the last five years but plan to break this cycle with a well-earned break on the water during 2019. With Dockmate installed, they know that docking their vessel, one of the most stressful manoeuvres that a skipper can face, will be a breeze and there will be no arguments or frosty moments, dockside.

Dirk compares the modular design of Dockmate to Lego where its modules are built on a 'base plate' to make a final, intuitive product which can constantly evolve without the hindrance of old restrictions and compatibility issues. Dockmate's 'Lego bricks' come in different shapes, sizes and colours. Individually, they are very simple things which fit together, with a snap, to create a bigger more complex and impressive whole. Its modularity and flexibility make it easier and faster to tweak or create custom-built solutions on demand. It also has the infinite capacity to quickly adapt and change to maintain a competitive edge with room for creativity. "Whatever is needed, we can build. We can make whatever can be imagined. We just add more bricks, or change the ones we have to meet the opportunity or challenge. The possibilities are endless."

When asked about the threat that self-docking boats might have on Dockmate in the future, Dirk responds by saying: "We know that the self-docking tech is only precise to a range of 1 metre from shore so a Dockmate will always be needed to finish off the job, stress free".



And what is the price of this tech. which never stays still but always provides total finger-tip control of a boat's movement (without compromising on the responsiveness of its engines, thrusters, anchor winches, windlasses and horns?) Well, that will be £3,000 for an entry level Dockmate system!

"Dockmate is a product that will never be finished. We've created a system which works well and will never become obsolete. There is evolution in every product and if you aren't constantly evolving your product, you don't have the right product. 20% of our business focuses on the updates needed to keep ahead of the rapidly changing tech behind engines and accessories. In three years' time the market will be completely different and you will need a product like Dockmate which can keep pace with change to make life on the water more enjoyable".

Further information on Dockmate can be found at [www.dockmatedirect.com](http://www.dockmatedirect.com) or from AllBoat Services, its sole distributor in the UK at [www.allboatservices.co.uk](http://www.allboatservices.co.uk)

#dockmate #dockmatedirect #allboatservices #dockmateboatcontrols #dockmateuk

Post tags: [dockmate](#), [dockmate direct](#), [dockmatedirect](#), [wireless boat controls](#)

Previous: [Engineering talent steers its way to AllBoat Services](#)

## RECENT POSTS

Dockmate, remote control boat docking tech that Dirk built

Engineering talent steers its way to AllBoat Services

Dockmate dealers sign up to its distribution network

## CATEGORIES

All Boat Services News

Dockmate

Boatshows

Bowthrusters

## POSTS BY MONTH

April 2019

March 2019

February 2019

January 2019

December 2018

November 2018






1:24 / 3:22

CC HD

Dockmate sea trial demonstration

1,870 views

35 2 SHARE SAVE ...



**Ask Captain Chris**  
Published on Apr 9, 2019

SUBSCRIBE 3.4K

Up next

AUTOPLAY



**Dockmate sea trial demonstration part 2**  
Ask Captain Chris  
438 views  
New





## Dockmate sea trial demonstration part 2

275 views



14



0



SHARE



SAVE



Ask Captain Chris

Published on Apr 10, 2019

SUBSCRIBE 3.4K

Up next

AUTOPLAY



How to: Leaving a Windy Berth |  
Motor Boat & Yachting

Motor Boat & Yachting

156K views

7:04



# Dockmate now able to interface directly with Ultraflex Electronic Engine Controls

April 14, 2019 By [gowb](#)

Dockmate, the affordable new wireless control system that enables skippers to remotely control their engines and other controls, can now interface directly with popular Ultraflex electronic engine controls.

The new CAN Bus interface, which directly connects the Dockmate system and Ultraflex electronic engine controls, enables complete, wireless, fingertip control over single or twin engines, gearboxes and throttle controls, bow and stern thrusters, anchor winches and even the ship's horn.

In addition, Dockmate's new wireless charging pad can wirelessly charge not only the handy Dockmate Twist remote but also later model Samsung and Apple phones.

Dockmate allows skippers to leave their helm station, with its often restricted view, and get a much closer look at their surroundings, while remaining in total control. This is especially useful in marinas and other tight quarters situations, enabling skippers to enjoy stress-free docking, regardless of the conditions.



Using next generation, state of the art technology, Dockmate has a wide operating range. It can connect in three different ways: through analogue, digitally through CAN Bus technology or via the gearbox interface.

Dockmate is compatible with Volvo IPS and Zeus Pod systems and can also remotely control dynamic positioning functions.

Its modular design enables functions to be added at any time and Dockmate comes with a three-year factory warranty.

There are four Dockmate wireless remote control systems: Single, Twin, Twist 3-axis joystick with proportional control and Twist IPS for Volvo Penta IPS or Zeus pods and will be on display at the show with [Lusty & Blundell](#)

[Buy your tickets](#)

[Meet Our Exhibitors](#)

[Getting here](#)



# Great Products FOR Boating

Your boating adventure starts here, with a selection of leading products to improve your time out on the water. Join the conversation on our social media channels and let us know about any of these products you've used. You can recommend a great product for us to review by contacting [info@boatgoldcoast.com.au](mailto:info@boatgoldcoast.com.au)



## POWERTEC CEL-FI GO/2 MARINE MOBILE SIGNAL BOOSTER

The Cel-Fi GO for Telstra or GO2 for Vodafone Smart Repeater is the ideal product to boost and distribute a 3G/4G mobile signal on a boat, ship or marine vessel. Supporting voice and mobile internet for multiple mobile devices, boosting your mobile coverage at sea has never been easier. The Cel-Fi GO/GO2 Smart Repeater is the ideal product to boost and distribute a 3G/4G mobile signal on a boat, ship or marine vessel. Supporting voice and mobile internet for multiple mobile devices, boosting your mobile coverage at sea has never been easier. [www.powertec.com.au](http://www.powertec.com.au)



## DOCKMATE WIRELESS REMOTES

Complete control of your vessel, all from the palm of your hand. Manoeuvre your boat with ease and accuracy from anywhere on board with control of your engines, bow and stern thrusters, anchor winch and horn. The Dockmate TWIST Joystick is fully proportional and provides even greater control and responsiveness, with the option for speed control. Also compatible with POD drive systems, including the dynamic positioning function. With European design and manufacture and a three year factory warranty, every Dockmate system is unique and customised to the individual vessel. The hand held controller provides the exact feeling and response time as your helm controls to make using the Dockmate remote even easier. With 88 bit encoding, Dockmate is highly secure and reliable. Operating on two-way frequency hopping spread spectrum with FM modulation on the 433MHz band for uninterrupted communication and superior range. Make manoeuvring your vessel a flawless operation with a Dockmate wireless remote. [www.dockmate.com.au](http://www.dockmate.com.au)



## MERCANE ELECTRIC SCOOTER

The new Mercane Scooter is high quality Korean design product. It is available in rear wheel drive or dual drive option with torsion suspension capable of light off road use. A great option for boating and RV transport when you need to get to town or just explore. The Mercane is the ultimate electric kick-scooter with wide wheels, 100mm ultra wide tires, portable folding design, and a cruise mode for driving. To test drive and order call John at 0418 760 399. [www.jetsskiparts.com.au](http://www.jetsskiparts.com.au)



## OLD SKIPPER - #dontravelalone

Old Skipper is an exclusive brand of bracelets, all handcrafted in a small village in Romania, that represents those adventurers who have succeeded in life on their own strengths. Made out of high quality marine rope and genuine Italian leather, their collection is inspired by sailors, travellers and people who love the ocean. The Nautical Rope Bracelets are the core of Old Skipper, being the first product that captured the adventurous spirit of the brand. Old Skipper also creates custom bracelets with your company colors, logo or packaging, that build brand awareness, create a professional image and leave a lasting impression with clients and employees. Old Skipper is looking for partners to help introduce the brand while adding extra revenue to their business. See their products at Marina Mirage and check their bracelets at Sanctuary Cove International Boat Show 2019 Stand 93. [www.oldskipper.com.au](http://www.oldskipper.com.au)



## M-TECH (MARINE TECHNOLOGIES) SERVICE PEDESTALS

Manufactured from 6mm dense aluminium anodised to 25 microns which far exceeds the Marine Pedestal Standard of 15 microns - aluminium composite service access panels, manufactured to current AS/NZS wiring regulations. Each pedestal can be installed on floating pontoons, fixed pontoons, breakwaters, quay side developments, boat yards and dry stack areas. Options available include 15 Amp single phase socket outlets up to 800 Amp three-phase IP66/IP67 sockets outlets, lockable switchgear access doors, electrical/water utility metering, 1/2" - 2" water services, energy saving LED lighting, photocell controlled lighting options, voltage indicator lights, integrated Fusion entertainment system, data and media communication outlets, wide range of custom colour finishes. [www.m-tech.com.au](http://www.m-tech.com.au)



# AUTOMATED DOCKING IS NOT JUST FOR LEISURE BOATS

HOME >> NEWS >> PROMOTIONS >> SEAWORK >> AUTOMATED DOCKING IS NOT JUST FOR LEISURE BOATS

24 Apr 2019

Email  Share  Print 

All boats with electronic engine control, regardless of the type or length, can be equipped with the Dockmate system.

At this year's Seawork International, the Dockmate team will demonstrate how the remote boat docking technology, with fingertip control, can be used to steer a boat in a tight slip, negotiate challenging docking conditions and manoeuvre a boat singlehandedly with ease.

"Built by yachtsmen with more than 40 years' experience to simplify the difficult and stressful docking experience the Dockmate is a simple, future-proof boat steering system which controls, to the centimetre, how to berth safely," said John Ainsworth, business development director for Dockmate Direct. "The transmitter's layout is simple, its modular technology will never become obsolete and if you buy a new boat you can take your Dockmate system with you."

**Modular system**

The system is used for wireless remote control of engines, bow thruster, stern thruster and anchor windlasses. Dockmate Twist also provides wireless joystick control for engines and thrusters including proportional thrusters and full function control of Volvo Penta IPS drives.

The transmitter has a signal that reaches up to 50m, is waterproof and floats. In its most simple configuration, the transmitter sends a coded digital signal to the receiver which operates the gears and horn. The system can be modularly extended to include a bow thruster, stern thruster and up to two windlasses. It works on both 12 and 24V boats as well as metal boats and can be converted to work with engines that have mechanical push/pull cables.

All handsets switch off after 30 minutes of non-use and have re-chargeable batteries and a USB cable for charging. In addition, the Twist handset has cordless inductive capability.

Visit Dockmate at Seawork International 2019 on stand PY5



Dockmate will demonstrate how its remote boat docking technology, with fingertip control, can be used to steer a boat

## LATEST PRESS RELEASES

### RIDING4DREAMS TEAM WILL BE TRAINING AND FUNDRAISING AT THE THAMES VALLEY AND LONDON BOAT SHOW

A team of twelve including marine industry professionals will be riding from London to Paris from th... [READ MORE](#)

### BACK TO THE FUTURE - CHRISTIAN BREWER RETURNS TO BARTON MARINE

Christian Brewer has returned to Barton Marine as Global Sales Manager. [READ MORE](#)

### FAIRLINE YACHTS UNVEILS NEW SQUADRON 68 MODEL

Luxury British boat builder, Fairline Yachts, announces details of its stunning new Squadron 68, set... [READ MORE](#)

### MS AMLIN YACHT TO EXHIBIT AT THAMES VALLEY & LONDON BOAT SHOW

MS Amlin Yacht announce that they will be exhibiting at the inaugural Thames Valley & London Boat Sh... [READ MORE](#)

### SOUTH DEVON MARINE ACADEMY APPOINTS ADPR TO HELP INSPIRE THE NEXT GENERATION OF THE MARINE INDUSTRY

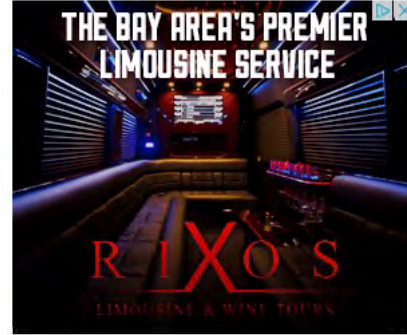
Communications agency, ADPR, has been brought on-board to help South Devon Marine Academy raise awar... [READ MORE](#)





## Make Docking Easier with Dockmate

Dockmate is a wireless remote-control system that simplifies boat docking



PLYMOUTH, ENGLAND, April 11, 2019 /24-7PressRelease/ -- If you want to simplify boat docking, need tips for easier boat docking, need a yacht

controller that can dock a boat with ease, need help to dock a boat solo, steer a boat in a tight slip, or manoeuvre a boat singlehanded in a tight berth or waterway, the Dockmate wireless remote control system gives you the boat handling skills to dock without drama, negotiate challenging docking conditions, such as high winds or strong currents, and ultimately prevent docking disasters.

Can I use the Dockmate wireless remote-control docking system on my boat?

The Dockmate wireless remote-control boat docking system can be used on any boat or yacht with electronic engine controls. It's a highly reliable, intuitive remote-control system suitable for all boats, whatever their size, type or age. Whether you need boat docking skills or the docking techniques to help to dock a powerboat, motorboat, sailboat, or yacht, Dockmate gives you complete control of your vessel and the confidence to ensure stress free docking, whatever the conditions.

The Dockmate is a simple, future-proof boat steering system

The Dockmate has been built by yachtsmen with over 40 years' experience to simplify the difficult and stressful docking experience. It controls, to the centimetre, how you berth safely. The transmitter's layout is simple and at the heart of the product, it houses future-proof internal electronics. The Dockmate technology will never become obsolete, in a rapidly changing market that is constantly evolving, and if you buy a new boat you can take your Dockmate system with you.

How to dock a boat with the Dockmate Yacht Controller

Dockmate is an affordable, remote boat docking system and yacht controller which provides wireless bow thruster remote control, wireless stern thruster remote control, wireless one engine remote control, wireless twin engine remote control, wireless anchor winch remote control, wireless windlasses remote control and wireless horn remote control.

Dockmate's wireless boat steering system also offers great potential to those with restricted movement. Skippers can use the technology to operate electronically controlled engines from anywhere on board with a small handheld device.

The yacht controller Dockmate system provides fingertip control of:

- One or two engines
- Bow and stern thrusters
- One or two anchor winches or windlasses
- Horn



### TOP NEWS



Productivity rises in tech firm that gives workers Wednesdays off

Like 18 S



Six killed in Libya capital as diplomats wrangle over ceasefire

Like 0 S



First-generation solar electric car to be built in Sweden in 2020

Like 6 S



Egypt sets date for referendum on extending Sisi's rule

Like 0 S



Sudan's Bashir moved to prison as doctors rally

Like 0 S



Flood of lawsuits, flight of investors on cards with US Cuba move

Like 0 S



Chef Ariel Fox talks about Dos Caminos, winning 'Hell's Kitchen' **SPECIAL**

Like 0 S



Opposition candidate the official winner in tight Istanbul vote

Like 0 S



UK to roll out age checks for porn in world first

Like 1 S





Dockmate Twist also provides wireless joystick control for engines and thrusters including proportional thrusters and full function control of shaft and pod drives.

What is the Dockmate Yacht Controller?

The Dockmate is a pocket-sized, wireless extension of a boat's engine controls which gives boaters the exact same feeling and response time of the accessories used, to ensure a seamless user experience. The system, which can be customised to meet specific preferences of individual boaters, enables you to leave the helm, get a closer look at your surroundings and remain in complete control of the boat's movement. It can replace a winch or the physical work when mooring so that your boat does all the work through Dockmate, including tightening the ropes.

The transmitter's two-way communication ensures faultless operation with a five-channel Frequency Hopping Spectrum System (FHSS), which is a wireless technology that spreads a signal over rapidly changing frequencies for uninterrupted transmissions. It is not affected by interference from other remote systems.

How does the Dockmate Yacht Controller work?

Dockmate offers 4 wireless remote-control systems: the Single, Twin, the Twist 3-axis joystick with proportional control and Twist IPS for Volvo Penta IPS or Zeus pods.

A 5 function Dockmate system which controls two engines, a thruster, anchor winch and horn is also available.

Each Dockmate system includes plug and play cables for most brands. Its other features include:

- 2 way communication, ensuring faultless operation.
- 88 bit encoding for reliable data transmission.
- 12 double relays, 2 single for improved safety.
- Visual and audible confirmation on the transmitter of the receiver status.
- Enhanced range of 150 feet (50 meters).
- Rugged/powerful, waterproof floating handheld transmitter with easy grip rubber finish.
- Automatic take command via the transmitter to make it the active station.
- Panic function/emergency switch-off on the transmitter.
- Automatic shutdown of the transmitter after 30 minutes of non-use to optimise the performance of its built-in rechargeable lithium polymer battery.
- Complete flat surface of the transmitter - no switches or keys to move or press accidentally.
- Modular construction of the receiver; each receiver can be fully customized in a couple of minutes, additional control modules can be ordered and installed anytime.
- Easy to hide, compact receiver for discrete installation (8.75 x 8.75 x 2.5").
- Power supply to the receiver (12 of 24V) from 2 different sources, with power redundancy for increased safety.
- Waterproof connectors on the receiver.
- Also available for single engine boats.

3 Year Manufacturer's Warranty



reprisals as US targets foreign interests in Cuba

Like 2



Be the first of your friends to like this



- 3 Year Manufacturer's Warranty.

How much does the Dockmate Yacht controller cost?

It will cost from £3,000.00 (net) for an entry level Dockmate single or Dockmate twin, next generation, wireless remote control. We can also fit Dockmate on any boat or yacht, from driveways to marinas, across the UK. Installation can be completed in less than a day.

How do I buy the Dockmate system and make docking my yacht easier?

If your docking involves shouting or swearing, the Dockmate system is a necessary indulgence! Boating should be fun! Get docking under control and change your boating experience by achieving perfect docking every time with Dockmate.

Dockmate Direct is part of the AllBoat Services group, Dockmate's sole UK distributor. Our experts can either come to you and your boat or demonstrate Dockmate's remote boat docking system at one of the many boat shows we are exhibiting at throughout the year:

For the Public: Poole Harbour Boat Show (Poole Quay Boat Haven)

7th – 9th June 2019

<https://www.pooleharbourboatshow.co.uk/>

For the public: Southampton Boat Show (Southampton Quay!)

13th – 22nd September 2019

<https://www.southamptonboatshow.com/>

If you're looking for supply, installation, advice, a fixed price quote, a boat survey or a general discussion about your individual requirements, please contact our friendly, professional and knowledgeable team at Dockmate Direct today on 01752 492609 or e-mail [info@dockmatedirect.com](mailto:info@dockmatedirect.com) and find out how easy docking your boat and yacht can get!

<https://www.dockmatedirect.com/>

---

Press release service and press release distribution provided by <http://www.24-7pressrelease.com>

#### CORPORATE

Contact Us  
About Us  
Advertise  
Investors & Partners

#### HELP & SUPPORT

Editorial Guidelines  
Terms of Use  
Privacy Policy

#### NEWS LINKS

Latest News  
Live Events  
News Alerts  
ACCESSWIRE  
GlobeNewswire News  
Global Press Releases  
[24-7PressRelease.com](http://24-7PressRelease.com)  
DX Journal  
DX Institute



## Dockmate wireless docking remote, life is easier with a remote control

April 3, 2019 / in Boating Electronics / by doktor.admin

Dockmate wireless docking remote, life is easier with a remote control



Many times I've wished I could step away from Have Another Day's helm but still control the engines from a better vantage point, or from where I want to handle a line. So it was great when Dockmate U.S. representatives came to Gulfport, FL to install their wireless remote system for me to review. In this entry, I'll describe the system and my experiences with using it so far, which have been positive.

The content for this post was sourced from [www.panbo.com](http://www.panbo.com)

[View the Original Article](#)



### An update on internet options, strong cellular and variable WiFi results

April 12, 2019 - 6:25 pm

An update on internet options, strong cellular and variable WiFi results My family and I have been back living and traveling aboard Have Another Day for about nine months now. Our boat is a huge consumer of bandwidth so I've learned a lot about what works and what doesn't. Here's an update and some tips [...]



### Testing Blue Guard's BG-One oil detecting bilge pump switch

April 10, 2019 - 9:31 pm

Testing Blue Guard's BG-One oil detecting bilge pump switch In the last six months Blue Guard Innovations' BG-One Smart Bilge Pump Switch with Oil and Fuel Detector racked up new product awards, winning an IBEX Innovations Award, a Sail magazine Pittman Award, and a DAME design award Special Mention. So it's great to have one [...]



### VIKING's remarkable 800+ person LifeCraft system, Torqeedo powered

April 9, 2019 - 8:12 pm

VIKING's remarkable 800+ person LifeCraft system, Torqeedo powered Viking Life-Saving Equipment has designed an almost frightening number of innovations into its LifeCraft system, so it's good to see that it apparently tested fine in North Sea waves ranging from 12 to 15 feet with 33-foot peaks. The system may soon make big cruise ships safer, [...]



### Lowrance Delivers Complete Fishing System with Availability of LiveSight Sonar

April 7, 2019 - 3:15 am

Lowrance Delivers Complete Fishing System with Availability of LiveSight Sonar Lowrance, a world-leading brand in fishing electronics since 1957, announced today that its Lowrance LiveSight Sonar transducer will be available for consumer purchase in May 2019. Immediately compatible with Lowrance HDS LIVE displays\* – America's Number One Fishfinder – LiveSight Sonar gives users the ability [...]



### Torqeedo: Mike Elsea wins \$73,000 in Kayak Bass Fishing Championship

April 5, 2019 - 6:31 pm



## Dockmate wireless docking remote, life is easier with a remote control

April 3, 2019 / in Boating Electronics / by doktor.admin

Dockmate wireless docking remote, life is easier with a remote control



Many times I've wished I could step away from Have Another Day's helm but still control the engines from a better vantage point, or from where I want to handle a line. So it was great when Dockmate U.S. representatives came to Gulfport, FL to install their wireless remote system for me to review. In this entry, I'll describe the system and my experiences with using it so far, which have been positive.

The content for this post was sourced from [www.panbo.com](http://www.panbo.com)

[View the Original Article](#)



**VIKING's remarkable 800+ person LifeCraft system, Torqeedo powered**

April 9, 2019 - 8:12 pm

VIKING's remarkable 800+ person LifeCraft system, Torqeedo powered Viking Life-Saving Equipment has designed an almost frightening number of innovations into its LifeCraft system, so it's good to see that it apparently tested fine in North Sea waves ranging from 12 to 15 feet with 33-foot peaks. The system may soon make big cruise ships safer, [...]



**Lowrance Delivers Complete Fishing System with Availability of LiveSight Sonar**

April 7, 2019 - 3:15 am

Lowrance Delivers Complete Fishing System with Availability of LiveSight Sonar Lowrance, a world-leading brand in fishing electronics since 1957, announced today that its Lowrance LiveSight Sonar transducer will be available for consumer purchase in May 2019. Immediately compatible with Lowrance HDS LIVE displays\* – America's Number One Fishfinder – LiveSight Sonar gives users the ability [...]



**Torqeedo: Mike Elsea wins \$73,000 in Kayak Bass Fishing Championship**

April 5, 2019 - 6:31 pm

Torqeedo: Mike Elsea wins \$73,000 in Kayak Bass Fishing Championship Mike Elsea of Mooresville, Indiana took home the \$50,000 grand prize and \$23,000 in additional prize money for winning the Kayak Bass Fishing (KBF) National Championship held March 28 – 30 in Shreveport, Louisiana. Torqeedo renewed its longtime commitment to the sport and returned to [...]



**Top Kayak Anglers at 2019 KBF National Championship Credit HyperVision Sonar**

April 5, 2019 - 6:29 pm

Top Kayak Anglers at 2019 KBF National Championship Credit HyperVision Sonar This past weekend, March 28-30, marked Kayak Bass Fishing's 2019 National Championship... In this elite field, competition was hot and heavy... Pro kayak angler Drew Gregory placed second at the event, his kayak rigged with the brand new Raymarine Element sonar/GPS display, which he [...]



**Dockmate wireless docking remote, life is easier with a remote control**

April 3, 2019 - 4:51 pm





## Great Lakes Boating

@glboating

Home

About

Photos

Videos

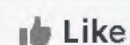
Posts

Community

Offers

Info and Ads

Create a Page



Like



Follow



Share



36

3 Shares



Like



Comment



Share



Write a comment...



### Great Lakes Boating

March 20 at 6:51 PM · 🌐

Dockmate USA announced a next-generation docking system and we can't wait to get our hands on it! 🤖 <https://www.greatlakesboating.com/.../dockmate-announces-next...>



3



Like



Comment



Share



Write a comment...



### Great Lakes Boating

March 18 at 11:05 AM · 🌐

Contact Us



Send Message

## Community

See All



Invite your friends to like this Page



3,476 people like this



3,533 people follow this

## About

See All



(208) 542-2216



Typically replies within a day  
[Send Message](#)



[greatlakesboating.com](http://greatlakesboating.com)



Media/News Company



[Suggest Edits](#)



## Page Transparency

See More

Facebook is showing information to help you better understand the purpose of a Page. See actions taken by the people who manage and post content.



Page created - July 30, 2008

## Team Members



Vanessa Oler

## Related Pages



Great Lakes Scuttlebutt Magazine



Like



### Boating Magazine

Marcus Hamilton likes this Magazine



Like



### SHTF Survival Secrets

Patrick Vaillancourt likes ... Media/News Company



Like





## Dockmate Announces Expanded Relationship with VETUS

Manufacturer of Wireless Yacht Remote Controls Enhances Integration with VETUS Thrusters

APRIL 2019 / NEWS / WEB EXCLUSIVE

SHARE

f FACEBOOK

NEWSLETTER



Dockmate, manufacturer of advanced wireless remote controls for yachts, announced today it has expanded its relationship with thruster manufacturer VETUS.

Delivering “plug-and-play” connectivity with common engine and thrusters controls, Dockmate’s wireless remote-control system allows boaters to remain in complete control of the boat’s movement while away from the helm, where visibility is often very limited. Building on its highly successful partnership, the Dockmate system now integrates fluidly with the complete catalog of VETUS thrusters.

“VETUS offers boaters some of the most powerful and versatile thruster solutions on the market,” said Brian Sheehan, Dockmate U.S. spokesperson. “Our close technology partnership has allowed us to achieve deep product integration and offer VETUS customers a unique, fully-customizable product that relieves the stress of maneuvering in tight quarters and singlehanded docking.”

“The Dockmate team truly understands the benefits of thruster technology and has designed a solution to increase confidence and enhance peace of mind for boaters,” said Chris Deboy, vice president of sales and marketing, VETUS. “We are confident that our customers will greatly enjoy the benefits Dockmate’s intuitive wireless control add to the simplicity of low-speed maneuvering and docking.”







Get ready for summer with  
the A/C solutions from Webasto

> More

Dear Ashley Staples,

#### PEOPLE



**Irwin Jacobs, wife dead in murder/suicide**  
Irwin Jacobs, the flamboyant former CEO of the now-bankrupt Genmar Holdings, and his wife Alexandra were found shot Wednesday in their Minnesota home ...

THE WORLD'S MOST AWARDED  
MARINE STEREO



#### LEGAL & REGULATORY



**Idaho County moves to restrict wakeboats, PWCs**  
It what appears to be growing trend, Valley County, Idaho has become the latest governmental body to propose restrictions on wake boats and personal w ...

#### PARTNERSHIP



**Singapore show organiser to help develop Hong Kong market**  
A Memorandum of Understanding (MOU) was signed at the Asia Pacific Superyacht Conference (APSC) this week to help develop the leisure marine sector in ...

**LUMISHORE**

UNDERWATER  
LED LIGHTING

FOR BOATS  
OF ALL SIZES



**NauticLED™**  
Save Energy  
Order now

**LUMISHORE**

FEATURED  
COMPANY

SEEING  
THE LIGHT

>>> Click here <<<



---

## BOAT LAUNCHES



**Whitehaven Motor Yachts unveils new models**  
Australia's Whitehaven Motor Yachts used the Empire Lounge at Sydney Seaplane Terminal in Rose Bay recently to officially launch two new vessels – the ...

---

## COMPANIES



**Dockmate expands relationship with Vetus**  
Dockmate, the US manufacturer of advanced wireless remote controls for yachts, has expanded its relationship with Dutch thruster manufacturer Vetus.

**Acquera Yachting opens three new locations**  
Acquera Yachting has announced expansion plans to open three new offices service Monaco, Antibes and St Tropez and has hired Xavier Paris to manage the ...

---

## MORE PEOPLE



**IMTRA Corp restructures leadership team**  
IMTRA, the US manufacturer and importer of marine products, has restructured its key management team with immediate effect.

---

## MARINAS



**Campania Yachting forms in Italy**  
A new promotional campaign covering the Italian region of Campania and initially including three marinas has been established. Called 'Campania Yachti ...

This email was sent to **[email address suppressed]**

[Unsubscribe from this email](#)

[Unsubscribe from ALL newsletters](#)



**DOCK WITH CONFIDENCE.**  
DOCK WITH DOCKSENSE.



**Raymarine**

COMPANIES

## Dockmate expands relationship with Vetus

April 11, 2019



**US manufacturer of wireless yacht remote controls enhances integration with Vetus thrusters**



**The Dockmate system now integrates fluidly with all Vetus thrusters**

Dockmate, the US manufacturer of advanced wireless remote controls for yachts, has expanded its relationship with Dutch thruster manufacturer Vetus.

Delivering "plug-and-play" connectivity with common engine and thrusters controls, Dockmate's wireless remote-control system allows boaters to remain in complete control of the boat's movement while away from the helm, where visibility is often very limited. Building on its highly successful partnership, the Dockmate system now integrates fluidly with the complete catalogue of Vetus thrusters.

"Vetus offers boaters some of the most powerful and versatile thruster solutions on the market," says Brian Sheehan, Dockmate US spokesperson. "Our close technology partnership has allowed us to achieve deep product integration and offer Vetus customers a unique, fully-customisable product that relieves the stress of manoeuvring in tight quarters and single-handed docking."

"The Dockmate team truly understands the benefits of thruster technology and has designed a solution to increase confidence and enhance peace of mind for boaters," says Chris Deboy, vice president of sales and marketing at Vetus. "We are confident that our customers will greatly enjoy the benefits Dockmate's intuitive wireless control add to the simplicity of low-speed manoeuvring and docking."

**Equipment Manufacturers**



**Torqeedo**

New for  
**2019**

**Deep Blue  
100<sup>kw</sup>**



**Available  
in low-rpm**

### Most popular



**2019 London Yacht Show cancelled**

**Jeanneau announces new monocat boat concept**



**Irwin Jacobs, wife dead in murder/suicide**



**Brunswick names new Mercury president**



**European Commission issues Brexit guidance on Recreational Craft Directive**





Pursuit DC 266



Scout 530 LXF



World Cat 400DC-X



Yamaha 275 SD



## 2019 Miami Boat & Yacht Show Recap

**THE SUN WAS HOT**, the crowd was buzzing and the docks were jam-packed at yet another successful pair of Miami boat shows. This hub for product reveals did not disappoint, with plenty of new boats, engines and accessories being showcased at both the Miami International Boat Show and the concurrent Miami Yacht Show. Here are a few of the debuts.

### BOATS

> Making its U.S. debut, the **Absolute** 62 Fly offers three wide cabins, Volvo Penta IPS-950 D11 engines and a spacious galley. [ABSOLUTEYACHTS.COM](http://ABSOLUTEYACHTS.COM)

> **Aquila** introduced the new Aquila 30, as well as its new Hydro-Glide Foil System as an option on the Aquila 36. [AQUILABOATS.COM](http://AQUILABOATS.COM)

> **Aviara Boats**, a newcomer to the industry, launched its new AV32 luxury bowrider in both outboard and sterndrive configurations. [AVIARABOATS.COM](http://AVIARABOATS.COM)

> The **CABO** brand was reintroduced at the Miami Yacht Show, showcasing its new CABO 41 model — a convertible sportfishing and luxury motor yacht. [HATTERASYACHTS.COM](http://HATTERASYACHTS.COM)

#### PROMO/CABO-41

> **Chaparral** had its new 300 OSX on display — part of its outboard sport luxury (OSX) class of boat. [CHAPARRALBOATS.COM](http://CHAPARRALBOATS.COM)

> **Chris-Craft** revealed its new Catalina 27 Pilot House — a center console with superior wind protection and mahogany accents. [CHRISCRAFT.COM](http://CHRISCRAFT.COM)

> **Cobalt** unveiled its new 2020 model, the A29, which showed off some fun options, like the patent-pending Splash & Stow inflatables management system. [COBALTBOTS.COM](http://COBALTBOTS.COM)

> **EdgeWater** debuted its new 230 CX, a crossover model that features dual consoles and Yamaha FourStroke power up to 300-hp. [EWBOATS.COM](http://EWBOATS.COM)

> **GM** displayed a prototype of its electric pontoon boat, Forward Marine First. This boat will not need fuel, is quiet and produces zero emissions. [FORWARDMARINE.COM](http://FORWARDMARINE.COM)

> **Jeanneau's** new NC 37 was on display, offering a one-level layout, a side door at the helm station and a three-cabin configuration. [JEANNEAUAMERICA.COM](http://JEANNEAUAMERICA.COM)



Cabo 41



Jeanneau NC 37

> **Pursuit Boats** had its new DC 266 dual console on display, boasting a fiberglass hardtop and twin Yamaha outboards. [PURSUITBOATS.COM](http://PURSUITBOATS.COM)

> **Regal Boats'** new outboard-powered 38 XO is equipped with triple Yamaha 300s, offering top speeds of almost 50 mph. [REGALBOATS.COM](http://REGALBOATS.COM)

> **Regulator Marine** announced its 26XO, a new center console crossover equipped with a Yamaha F300. [REGULATORMARINE.COM](http://REGULATORMARINE.COM)

> **Scout's** new flagship 530 LXF caught the attention of many passersby thanks to its optional six outboard configuration. The 53-foot model also features port and starboard hydraulic beach platforms. Scout had its new 235 Dorado on display as well.

#### SCOUTBOATS.COM

> **Sea-Doo** debuted its first PWC built for fishing, the Fish Pro 155. This watercraft also features Garmin GPS, a trolling mode and a sonar fish finder. [SEA-DOO.COM](http://SEA-DOO.COM)

> **Sea Ray** unveiled the first model in its new R Series, the 350 SLX-R. The 35-foot dayboat features twin Mercury 400R outboards, joystick piloting, LED underwater lights and 12-inch touchscreen displays. [SEARAY.COM](http://SEARAY.COM)

#### SEARAY.COM

> **Tiara Sport** unveiled its 38 LS with a new outboard package from Volvo Penta and Seven Marine. [TIARASPORT.COM](http://TIARASPORT.COM)

#### TIARASPORT.COM

> **World Cat's** new 400DC-X dual console catamaran made its show debut, featuring twin 425-hp Yamaha XTO Offshore outboards. [WORLDCAT.COM](http://WORLDCAT.COM)

> **Yamaha** showed off its new 275 Series, including the base model 275E, deluxe 275SE and flagship 275SD. These new models feature jet drive power, and the 275SD model features Yamaha's new DRiVE system with paddle controls. [YAMAHABOATS.COM](http://YAMAHABOATS.COM)

### ACCESSORIES

> **Dockmate** unveiled its upgraded wireless Dockmate docking system, which allows boaters to easily operate electronically controlled engines, bow and stern thrusters, and more. [DOCKMATE.US](http://DOCKMATE.US)

#### DOCKMATE.US

> **Fusion's** new peel-and-stick ARX70 ANT Remote makes operating a Fusion marine entertainment system accessible from anywhere on the boat. [FUSION.COM](http://FUSION.COM)

> **JL Audio** released its new M6 marine loudspeakers, featuring

a patent-pending Transflective RGB LED illumination and evenly dispersed sound. [JLAUDIO.COM](http://JLAUDIO.COM)

> **Sunbrella Marine's** new non-woven Horizon marine fabric is designed to resist bacterial staining and fading. [SUNBRELLA.COM](http://SUNBRELLA.COM)

### ENGINES

> **Indmar** announced its first-ever Ecoboost marine engine. While available in Ford automobiles since 2011, this innovative technology is now available for boats. [INDMAR.COM](http://INDMAR.COM)

> **Mercury Marine** launched its 400 Verado, the company's highest hp Verado outboard. [MERCURYMARINE.COM](http://MERCURYMARINE.COM)

> **Torqeedo** showed off its two new Deep Blue 100 i, 100 kW inboard motors. [TORGEEDO.COM](http://TORGEEDO.COM)

> **Yamaha** had its new T25 outboard engine on display. This engine delivers lightweight, electronic fuel injected performance in a small, high-thrust configuration. [YAMAHAAOUTBOARDS.COM](http://YAMAHAAOUTBOARDS.COM)



## Buzz

Search our site

GO

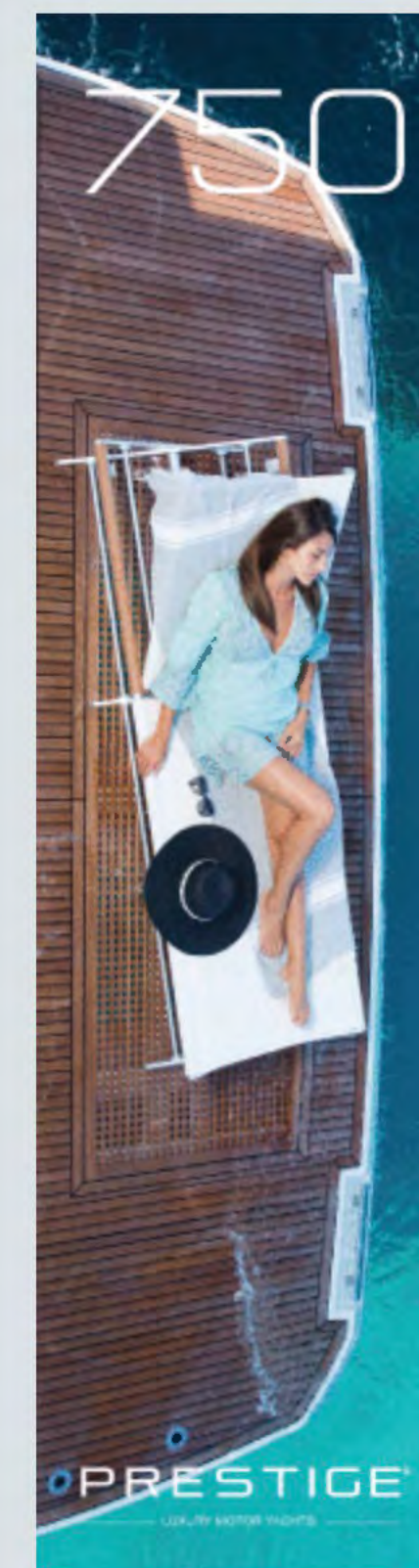


### BUZZ

## 2019 Miami Boat & Yacht Show Recap

05-Apr-2019

The sun was hot, the crowd was buzzing and the docks were jam-packed at yet another successful pair of Miami boat shows. This hub for product reveals did not disappoint, with plenty of new boats, engines and accessories being showcased at both the Miami International Boat Show and the concurrent Miami Yacht Show. Here are a few of the debuts.





> Regal Boats' new outboard-powered 38 XO is equipped with triple Yamaha 300s, offering top speeds of almost 50 mph.

[regalboats.com](http://regalboats.com)

> Regulator Marine announced its 26XO, a new center console crossover equipped with a Yamaha F300. [regulatormarine.com](http://regulatormarine.com)

> Scout's new flagship 530 LXF caught the attention of many passersby thanks to its optional six outboard configuration. The 53-foot model also features port and starboard hydraulic beach platforms. Scout had its new 235 Dorado on display as well. [scoutboats.com](http://scoutboats.com)

> Sea-Doo debuted its first PWC built for fishing, the Fish Pro 155. This watercraft also features Garmin GPS, a trolling mode and a sonar fish finder. [sea-doo.com](http://sea-doo.com)

> Sea Ray unveiled the first model in its new R Series, the 350 SLX-R. The 35-foot dayboat features twin Mercury 400R outboards, joystick piloting, LED underwater lights and 12-inch touchscreen displays. [searay.com](http://searay.com)

> Tiara Sport unveiled its 38 LS with a new outboard package from Volvo Penta and Seven Marine. [tiarasport.com](http://tiarasport.com)

> World Cat's new 400DC-X dual console catamaran made its show debut, featuring twin 425-hp Yamaha XTO Offshore outboards. [worldcat.com](http://worldcat.com)

> Yamaha showed off its new 275 Series, including the base model 275E, deluxe 275SE and flagship 275SD. These new models feature jet drive power, and the 275SD model features Yamaha's new DRIVE system with paddle controls. [yamahaboats.com](http://yamahaboats.com)

## ACCESSORIES

> Dockmate unveiled its upgraded wireless Dockmate docking system, which allows boaters to easily operate electronically controlled engines, bow and stern thrusters, and more. [dockmate.us](http://dockmate.us)

> Fusion's new peel-and-stick ARX70 ANT Remote makes operating a Fusion marine entertainment system accessible from anywhere on the boat. [fusion.com](http://fusion.com)

> JL Audio released its new M6 marine loudspeakers, featuring a patent-pending Transflective RGB LED illumination and evenly dispersed sound. [jlaudio.com](http://jlaudio.com)

> Sunbrella Marine's new non-woven Horizon marine fabric is designed to resist bacterial staining and fading. [sunbrella.com](http://sunbrella.com)

## ENGINES

> Indmar announced its first-ever Ecoboost marine engine. While available in Ford automobiles since 2011, this innovative technology is now available for boats. [indmar.com](http://indmar.com)

> Mercury Marine launched its 400 Verado, the company's highest hp Verado outboard. [mercurymarine.com](http://mercurymarine.com)

> Torqeedo showed off its two new Deep Blue 100 i, 100 kW inboard motors. [torqeedo.com](http://torqeedo.com)

> Yamaha had its new T25 outboard engine on display. This engine delivers lightweight, electronic fuel injected performance in a small, high-thrust configuration. [yamahaoutboards.com](http://yamahaoutboards.com)





## Dockmate announces expanded relationship with VETUS

by Andrew Golden 11 Apr 08:04 PDT



Wireless Yacht Remote Controls © Andrew Golden

[Tweet](#) [Like](#) [Share](#) [Sign Up](#) to see what your friends like.

**Dockmate, manufacturer of advanced wireless remote controls for yachts, announced it has expanded its relationship with thruster manufacturer VETUS.**

Delivering "plug-and-play" connectivity with common engine and thrusters controls, Dockmate's wireless remote-control system allows boaters to remain in complete control of the boat's movement while away from the helm, where visibility is often very limited. Building on its highly successful partnership, the Dockmate system now integrates fluidly with the complete catalog of VETUS thrusters.

"VETUS offers boaters some of the most powerful and versatile thruster solutions on the market," said Brian Sheehan, Dockmate U.S. spokesperson. "Our close technology partnership has allowed us to achieve deep product integration and offer VETUS customers a unique, fully-customizable product that relieves the stress of maneuvering in tight quarters and singlehanded docking."

"The Dockmate team truly understands the benefits of thruster technology and has designed a solution to increase confidence and enhance peace of mind for boaters," said Chris Deboy, vice president of sales and marketing, VETUS. "We are confident that our customers will greatly enjoy the benefits Dockmate's intuitive wireless control add to the simplicity of low-speed maneuvering and docking."

For more information please visit [www.dockmate.us](http://www.dockmate.us). For more information about VETUS, please visit [www.vetus.com](http://www.vetus.com).

0 Comments

Sort by [Newest](#)



Add a comment...

Facebook Comments plugin

Related Articles



#ZESTISBEST

NEW from  
**SELDÉN**  
**XPS**  
XTRA PROOF STRENGTH  
**Aluminium**

**PURCHASE POWER**  
'Right now Allen Performance Sailing Products offer US chandlers the best possible return'.  
[Click for details](#) **allen**

**upfront.com** Available Online  
**The best sailing brands**  
RONSTAN WÄNDBERSEN spinlock KAYAKS  
GOTTFRED RUFFLO facnor ROPEYE LOOP  
D-D PROTECT tapes HARKEN

06.4  
128°  
357  
It's all about the numbers  
**racegeek**





## April 2019 Newsletter

The Marine Electronics Newsletter is brought to you by the National Marine Electronics Association (NMEA) and its official magazine, the Marine Electronics Journal. The newsletter covers the fast-developing field of marine electronics for boat owners and features the experts of the NMEA.

Email us at [newsletter@marineelectronicsjournal.com](mailto:newsletter@marineelectronicsjournal.com)

### New from the *Marine Electronics Journal*

#### Dealing with change

Got an idea of how some aspect of the marine electronics industry can operate more effectively? What about potential solutions to issues challenging your business? Have you spotted anything--promising new technologies, procedures or approaches--that you want to discuss or ask about? We're launching a new column in this issue that will give dealers, technicians, installers, manufacturers, boat builders and others the opportunity to express their opinion, solve problems and network. We call it Here's My Take.

[Read more](#)



**NEW HALO24**  
OUR SAFEST RADAR YET



**SIMRAD**

Go With Confidence

[LEARN MORE](#)

#### Dealer Nightmares

Almost every marine electronics dealer has one--a business-related nightmare. Veteran dealers usually have more than one. As difficult and costly as many of these incidents can be, they offer lessons you won't find at any business school.

[Read more](#)





**Information display and Ship Control, hands on with next generation boat management interfaces**

**2019 Miami International Boat Show: Must-See Marine Electronics**

**Marine Electronics for Nighttime Safety**

**New Marine Electronics 2019**

**GPS date rollover affects older GPS units**

**Innovative electronics like Navico ID hardly mentioned, a new paradigm?**

**Tested: Raymarine's joystick-enabled DockSense assisted docking system**

**Analog instrument displays**

**World's Largest Center Console Adds GOST Security System**

**Dockmate Adds Wireless-Docking Features**



mini is mighty.



Introducing the  
TracPhone® V3HTS

[Learn More](#)



## AUTOMATED DOCKING IS NOT JUST FOR LEISURE BOATS

HOME >> NEWS >> SEAWORK >> AUTOMATED DOCKING IS NOT JUST FOR LEISURE BOATS

18 Apr 2019

[Email](#) 
[Share](#) 
[Print](#) 

**All boats with electronic engine control, regardless of the type or length, can be equipped with the Dockmate system.**

At this year's Seawork International, the team at Dockmate will demonstrate how its remote boat docking technology, with fingertip control, can be used to steer a boat in a tight slip, negotiate challenging docking conditions and manoeuvre a boat singlehandedly with ease.

"Built by yachtsmen with over 40 years' experience to simplify the difficult and stressful docking experience the Dockmate is a simple, future-proof boat steering system which controls, to the centimetre, how to berth safely," said John Ainsworth, Business Development Director for Dockmate Direct. "The transmitter's layout is simple, its modular technology will never become obsolete and if you buy a new boat you can take your Dockmate system with you," he adds.

All boats with electronic engine control, regardless of the type or length, can be equipped with the Dockmate system which comes with a three-year warranty and full technical support. It ensures the wireless remote control of engines (to include boats with only one engine also, horn, bow thruster, stern thruster and one or two Anchor windlasses). Dockmate Twist also provides wireless joystick control for engines and thrusters including proportional thrusters and full function control of Volvo Penta IPS drives.

The transmitter, worn with a neck strap, has a signal which reaches up to 50 metres, is completely waterproof and floats. In its most simple configuration, the transmitter sends a coded digital signal to the receiver which operates the gears and horn. The system can be modularly extended with a bow thruster, stern thruster and up to 2 windlasses. Dockmate requires installation and configuration to the vessel, works on both 12 and 24V boats as well as metal boats; and can be converted to work with engines that have mechanical push/pull cables. All handsets switch off after 30 minutes of non-use and have re-chargeable batteries and a USB cable for charging. In addition, the Twist handset has cordless inductive capability.

Visit Dockmate at Seawork International 2019 on stand PY5



Dockmate will demonstrate how its remote boat docking technology, with fingertip control, can be used to steer a boat

## LATEST PRESS RELEASES

### DAMEN MARINE COMPONENTS COMPLETES SUPPLY OF UNIQUE RUDDER AND STEERING GEAR SYSTEM TO ICE BREAKER

In an important milestone in the build of the Antarctic Supply Research Vessel (ASRV) Nuyina for the... [READ MORE](#)

### SUCCESSFUL FULL PERFORMANCE TEST CEMEX DREDGE PUMP E-MOTOR

Largest submersed permanent magnet e-motor passed test with flying colours [READ MORE](#)

### MANOR RENEWABLE ENERGY TO POWER HOHE SEE OFFSHORE WIND FARM

Manor Renewable Energy (MRE) Ltd has signed a contract with EnBW to provide the full temporary power... [READ MORE](#)

### HIGH SPEED TRANSFERS' SECOND DAMEN FCS 2710 TO DEBUT WITH SHELL

Supporting active drilling operations sets new level of CTV engagement [READ MORE](#)

### DAMEN AND ARRIVA EXTEND FERRY SERVICE FROM COPENHAGEN CITY CENTRE TO PORT AREA WITH TWO ADDITIONAL DAMEN FERRIES 2306E3

Arriva Danmark has extended the requirements of its contract with Damen Shipyards Group in order to ...

SHARE THIS ARTICLE



< [PREVIOUS ARTICLE](#)

[NEXT ARTICLE](#) >



# Make Docking Easier with Dockmate

If you want to simplify boat docking, need tips for easier boat docking, need a yacht controller that can dock a boat with ease, need help to dock a boat solo, steer...

Thursday, April 11th 2019, 3:30 AM EDT

**Updated:** Sunday, April 14th 2019, 2:04 AM EDT



## WIRELESS CONTROL FOR

- Engines
- Horn
- Bow Thruster
- Stern Thruster
- Two Anchor Windlass

Dockmate is a wireless remote-control system that simplifies boat docking

PLYMOUTH, ENGLAND, April 11, 2019 /24-7PressRelease/ -- If you want to simplify boat docking, need tips for easier boat docking, need a yacht controller that can dock a boat with ease, need help to dock a boat solo, steer a boat in a tight slip, or manoeuvre a boat singlehanded in a tight berth or waterway, the Dockmate wireless remote control system gives you the boat handling skills to dock without drama, negotiate challenging docking conditions, such as high winds or strong currents, and ultimately prevent docking disasters.

Can I use the Dockmate wireless remote-control docking system on my boat?

The Dockmate wireless remote-control boat docking system can be used on any boat or yacht with electronic engine controls. It's a highly reliable, intuitive remote-control system suitable for all boats, whatever their size, type or age. Whether you need boat docking skills or the docking techniques to help to dock a powerboat, motorboat, sailboat, or yacht, Dockmate gives you complete control of your vessel and the confidence to ensure stress free docking, whatever the conditions.



The Dockmate is a simple, future-proof boat steering system

The Dockmate has been built by yachtsmen with over 40 years' experience to simplify the difficult and stressful docking experience. It controls, to the centimetre, how you berth safely. The transmitter's layout is simple and at the heart of the product, it houses future-proof internal electronics. The Dockmate technology will never become obsolete, in a rapidly changing market that is constantly evolving, and if you buy a new boat you can take your Dockmate system with you.

How to dock a boat with the Dockmate Yacht Controller

**Naples teen hospitalized after hitting vape pen at school**

**Barefoot bandit steals boat with victims still onboard**

**Family mourns Cape Coral father and son killed in wrong-way crash**

**Fisherman hooks into a nearly 14-foot tiger shark off Captiva**

**Massive tiger shark caught off Captiva Island**

**Get the latest news in your inbox!**

Sign up for our daily email.

SIGN UP

By signing up, I agree to the [Terms of Service](#).

**Bet the Kentucky Derby**

**Choose Your Bonus**

\$500

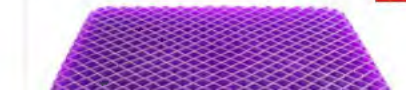
\$100

\$20

xpressbet



Hot





Dockmate is an affordable, remote boat docking system and yacht controller which provides wireless bow thruster remote control, wireless stern thruster remote control, wireless one engine remote control, wireless twin engine remote control, wireless anchor winch remote control, wireless windlasses remote control and wireless horn remote control.



Dockmate's wireless boat steering system also offers great potential to those with restricted movement. Skippers can use the technology to operate electronically controlled engines from anywhere on board with a small handheld device.

The yacht controller Dockmate system provides fingertip control of:

- One or two engines
- Bow and stern thrusters
- One or two anchor winches or windlasses
- Horn

Dockmate Twist also provides wireless joystick control for engines and thrusters including proportional thrusters and full function control of shaft and pod drives.

What is the Dockmate Yacht Controller?

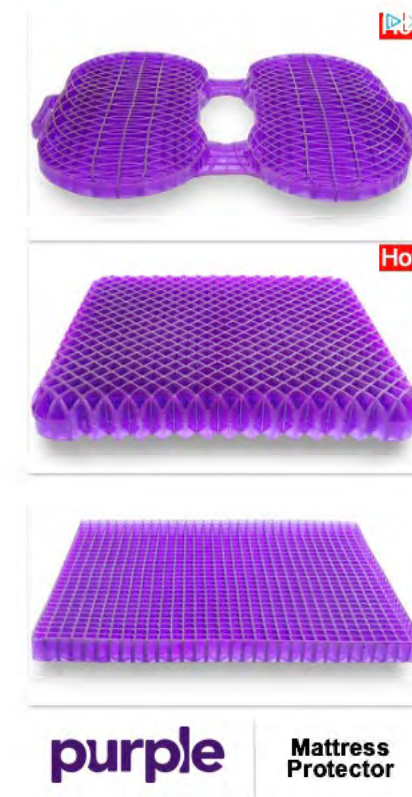
The Dockmate is a pocket-sized, wireless extension of a boat's engine controls which gives boaters the exact same feeling and response time of the accessories used, to ensure a seamless user experience. The system, which can be customised to meet specific preferences of individual boaters, enables you to leave the helm, get a closer look at your surroundings and remain in complete control of the boat's movement. It can replace a winch or the physical work when mooring so that your boat does all the work through Dockmate, including tightening the ropes.

The transmitter's two-way communication ensures faultless operation with a five-channel Frequency Hopping Spectrum System (FHSS), which is a wireless technology that spreads a signal over rapidly changing frequencies for uninterrupted transmissions. It is not affected by interference from other remote systems.

How does the Dockmate Yacht Controller work?

Dockmate offers 4 wireless remote-control systems: the Single, Twin, the Twist 3-axis joystick with proportional control and Twist IPS for Volvo Penta IPS or Zeus pods.

A 5 function Dockmate system which controls two engines, a thruster, anchor winch and horn is also available.





Each Dockmate system includes plug and play cables for most brands. Its other features include:

- 2 way communication, ensuring faultless operation.
- 88 bit encoding for reliable data transmission.
- 12 double relays, 2 single for improved safety.
- Visual and audible confirmation on the transmitter of the receiver status.
- Enhanced range of 150 feet (50 meters).
- Rugged/powerful, waterproof floating handheld transmitter with easy grip rubber finish.
- Automatic take command via the transmitter to make it the active station.
- Panic function/emergency switch-off on the transmitter.
- Automatic shutdown of the transmitter after 30 minutes of non-use to optimise the performance of its built-in rechargeable lithium polymer battery.
- Complete flat surface of the transmitter - no switches or keys to move or press accidentally.
- Modular construction of the receiver; each receiver can be fully customized in a couple of minutes, additional control modules can be ordered and installed anytime.
- Easy to hide, compact receiver for discrete installation (8.75 x 8.75 x 2.5").
- Power supply to the receiver (12 or 24V) from 2 different sources, with power redundancy for increased safety.
- Waterproof connectors on the receiver.
- Also available for single engine boats.
- 3 Year Manufacturer's Warranty.

How much does the Dockmate Yacht controller cost?

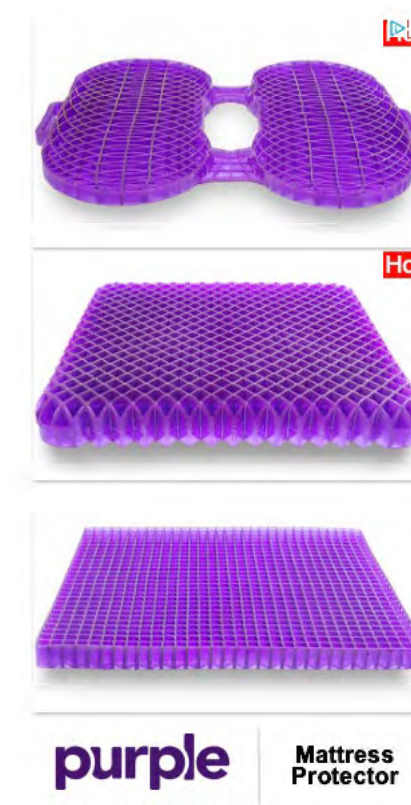
It will cost from £3,000.00 (net) for an entry level Dockmate single or Dockmate twin, next generation, wireless remote control. We can also fit Dockmate on any boat or yacht, from driveways to marinas, across the UK. Installation can be completed in less than a day.

How do I buy the Dockmate system and make docking my yacht easier?

If your docking involves shouting or swearing, the Dockmate system is a necessary indulgence! Boating should be fun! Get docking under control and change your boating experience by achieving perfect docking every time with Dockmate.

Dockmate Direct is part of the AllBaat Services group, Dockmate's sole UK distributor. Our experts can either come to you and your boat or demonstrate Dockmate's remote boat docking system at one of the many boat shows we are exhibiting at throughout the year:

For the Public: Poole Harbour Boat Show (Poole Quay Boat Haven)







**Panbo**  
@PanboMarineElectronics

- Home
- About
- Photos
- Videos
- Posts
- Community
- Info and Ads
- Create a Page

Like Follow Share ...

Learn More Send Message

**Panbo**  
April 3 at 12:54 PM · 🌐  
I've been testing Dockmate's wireless remote control for the last few months. Ben S.  
<https://www.panbo.com/dockmate-wireless-docking-remote-lif.../>



PANBO.COM  
**Dockmate wireless docking remote, life is easier with a remote control - Panbo**

Andrew Golden and 13 others 1 Comment 11 Shares

Like Comment Share

Most Relevant ▾  
Write a comment...  
Andrew Hickman Mandy Field, could drive from the master suite!!  
Like · Reply · 1w

**Panbo** shared a post.  
March 31 at 6:19 PM · 🌐  
My wife Laura's article in this month's Power & Motoryacht about our decision to keep cruising.

Community See All

Invite your friends to like this Page  
1,119 people like this  
1,280 people follow this  
Andrew Golden and 1 other like this or have checked in

About See All

(207) 200-3430  
Send Message  
www.panbo.com  
Media/News Company  
Suggest Edits

Page Transparency See More

Facebook is showing information to help you better understand the purpose of a Page. See actions taken by the people who manage and post content.  
Page created - February 1, 2011

Team Members

Ben Ellison

Related Pages

- Scuttlebutt Sailing News  
Andrew Golden likes this Recreation & Sports Website Like
- Practical Sailor  
Media/News Company Like





EDITORS' BLOG
 [f](#)
[t](#)

WIRELESS & APPS / CABIN & DECK GEAR / ELECTRICAL & ENGINES
 16

PRESS RELEASES

- Testing Blue Guard's BG-One oil detecting bilge pump switch

16 hours ago 1 Comment
- VIKING's remarkable 800+ person LifeCraft system, Torqeedo powered

2 days ago No Comments
- SiriusXM InfoLink, new features and lower priced SiriusXM weather receivers

2 weeks ago 8 Comments
- Aqua Map Master adds AIS, WiFi instrument data, USACE surveys and route explorer

3 weeks ago 12 Comments
- A Marine Installer's Rant golden oldie: "High Maintenance"

4 weeks ago 4 Comments

free  
nv charts App

Subscribe to Panbo to be notified of new posts and content

SUBSCRIBE NOW

We promise not to spam you, and you can unsubscribe at any time.

# Dockmate wireless docking remote, life is easier with a remote control

BY [BEN STEIN](#) · APRIL 3, 2019



Dockmate Twin on the left and Twist on the right

Many times I've wished I could step away from *Have Another Day's* helm but still control the engines from a better vantage point, or from where I want to handle a line. So it was great when Dockmate U.S. representatives came to Gulfport, FL to install their wireless remote system for me to review. In this entry, I'll describe the system and my experiences with using it so far, which have been positive.

## The System



- Torqeedo: Mike Elsea wins \$73,000 in Kayak Bass Fishing Championship
- Top Kayak Anglers at 2019 KBF National Championship Credit HyperVision Sonar
- Lowrance Delivers Complete Fishing System with Availability of LiveSight Sonar

RECENT PANBO COMMENTS

- Ben Ellison - Testing Blue Guard's BG-One oil detecting bilge pump switch - 30 mins ago
- Iar - FLIR buys Raymarine, good for everyone? - 9 hours ago
- Jim Hebert - GPS date rollover affects older GPS units - 20 hours ago
- SiriusXM InfoLink, new features and lower priced SiriusXM weather receivers - 1 day ago
- New Simrad Cruise is the Most Intuitive and Easy-to-Use Chartplotter Available - 1 day ago
- Standard Horizon GX6000 VHF & wireless RAM 4W mics, finally! - 2 days ago
- Ben Ellison - Actisense NMEA 2000 cables & connectors, plus network design tips - 3 days ago
- Ben Stein - Dockmate wireless docking remote, life is easier with a remote control - 3 days ago
- Ben Ellison - Long tests: Interlux Pacifica Plus and Torqeedo Travel 1003 - 3 days ago





The Dockmate receiver installed under Have Another Day's upper helm

Dockmate is new to the US having started distributing their systems in 2018 but the company began selling systems worldwide in 2012 with several thousand systems already installed. Their [latest system](#) is capable of controlling two engines, one or two windlasses, bow and stern thruster, and a horn. An install consists of a receiver that is typically located under a helm and connected to each of the items being controlled and a wireless remote.

Dockmate has an array of options for integrating with engines, thrusters, and windlasses to make the installation as simple and flexible as possible. On *Have Another Day* it controls my Volvo-Penta QL bow and stern thrusters, twin Volvo-Penta D12-EDC engines, horn and Maxwell 3500 windlass. They say a 5 function (two engines, thruster, anchor, and horn) system with a Twin remote will typically cost about \$7,500 installed. A 6 function (two engines, two thrusters, anchor, and horn) with the twist remote connected to CAN bus controlled engines will run about \$12,500, but there is a litany of equipment specific options that can influence specific pricing for your boat. So it's best to get a quote from a Dockmate installer.

Dockmate is designed to interface with electronically controlled engines, so, if you have mechanical engines with cable or hydraulic actuation of throttle and shift they will refer you to [Glendening for a compatible mechanical to electronic retrofit](#). Dockmate also offers a transmission interface box to directly control transmission shift solenoids, thus bypassing proprietary engine control systems.

### Receiver



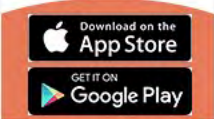
The receiver is about a 9-inch by 9-inch box that mounts out of sight near one of the helms so that it can be connected to the various controls that it too will control. It contains a series of interface boards or relays to control each function. Critical ones like thruster and engine commands have double relays, both of which must close to engage the function. This safety mechanism avoids a stuck relay resulting in unintended actuation of an engine or thruster.



In the event of any failure, out-of-range condition, dead batteries or other unexpected events, the system will return to neutral and the engine controls at the helm will be active. 12 or 24-volt power can be supplied to the receiver from two separate sources for further redundancy. The receiver has a series of LEDs on top of the



#### Handheld Navigation



#### Recent Forum Posts

RE: Howto disable STD Horizon AIS Receiver and integrate with AIS Transponder

Hi Frank, Your question is coincidental as I recently m...  
By [Ben Ellison](#), 15 hours ago

Howto disable STD Horizon AIS Receiver and integrate with AIS Transponder

Hi, I am new to marine Electronics, having just bought ...  
By [Frank Sonnemans](#), 19 hours ago

RE: Garmin Adds AtoNs Display Capability  
Excellent news. Thanks!  
By [Ben Ellison](#), 3 days ago

Garmin Adds AtoNs Display Capability  
Garmin add AtnNs Display in it's latest updates April 3...  
By [Tom Andresky](#), 3 days ago

RE: New radome and MFD, maybe AP too -- what to do?

PS. As for autopilot: I'd consider that the most option...  
By [Ben Ellison](#), 7 days ago

RE: New radome and MFD, maybe AP too -- what to do?

First of all, Clark, our fellow industry professionals ...  
By [Ben Ellison](#), 7 days ago





Remotes



Dockmate offers two styles of remotes, one with membrane push buttons available for either single or twin engine installs — called the Dockmate Single and Dockmate Twin — or their Twist which is a joystick style remote for twin-engine and pod-driven boats. The Twist provides joystick control of the boat, so pushing forward and starboard will result in the boat moving in that direction while a twist of the remote’s stick will result in the boat twisting as well.

While that’s pretty straightforward to do on an IPS equipped boat it takes some clever customization to make it happen on boats not already equipped with a joystick. I’ll show you some of Dockmate’s impressive customization capabilities below. All the remotes are waterproof and float though Dockmate also includes a neck lanyard to help you keep the remotes from going overboard.



The charging pad for the Dockmate Twist

The Twist remotes have rechargeable batteries that are charged using a wireless charging pad, the Single and Twin remotes use alkaline batteries. The pad uses the Qi wireless charging standard so I was pleased to find I could swap chargers with the [Raymarine Ray90](#) wireless handset as well as charge a Samsung Galaxy phone. The receiver and remote link wirelessly over an FM spread spectrum link utilizing five different 433mhz frequency channels at the same time to avoid interference, and in my testing that worked well.

SAFETY AT ANCHOR  
Anchor Watch

SAFETY FOR YOUR CREW  
Man Overboard

Δ P O L L O  
VESPER

NOW WITH  
APPLE  
AIRPLAY®

Works with  
Apple AirPlay

FUSION®

Paddlewheel  
maintenance...  
a thing  
of the past

Watch now ▶

UDST800  
Ultrasonic  
Speed  
Sensor

AIRMAR®



## Using the remote



Immediately after completing the install I walked the remote down the dock and tested range using the horn. In a marina surrounded by homes and full of boats, I found range in excess of 300 feet, and in regular use I've never had a single control input fail to transmit and execute the command. Incidentally, if the remote does get out of range, it will beep when a button is pressed and the link light will blink to indicate a failure (something I only experienced when I walked hundreds of feet down the dock).

Navigating your boat by remote control is a bit different. The Dockmate installer advised that it's best not to turn your body 180 degrees because it's difficult for your brain to handle the mismatch between the direction you push and the direction the boat moves. I'm not always good at listening to directions so one of the first times I used the remote I found myself looking off the stern wanting to move away from the dock. I pushed the joystick away from the dock and of course — since I and the remote were facing the wrong way — the boat headed right for the dock.

I've had the system onboard *Have Another Day* for a couple of months now and have had the opportunity to use it while departing a slip, docking, anchoring and weighing anchor. We travel a lot and have worked out a good routine for each of these operations so I wasn't sure how regularly I would use a remote. But I've found it to be a useful aid even in those circumstances where it's not an absolute must-have. When pulling out of a slip in high wind conditions the ability to tend lines on the bow — and control the engines and thrusters — while my wife works lines at the stern is very helpful.



I also really appreciate how I can stand at the bow while weighing anchor and carefully watch it come up while also keeping the bow in the right place. And when tightening lines it's helpful to be able to stand on the dock with the remote in hand and thrust the boat over. Finally, and although mine is connected to my windlass, we could have setup the Dockmate to wirelessly control the tender crane instead.

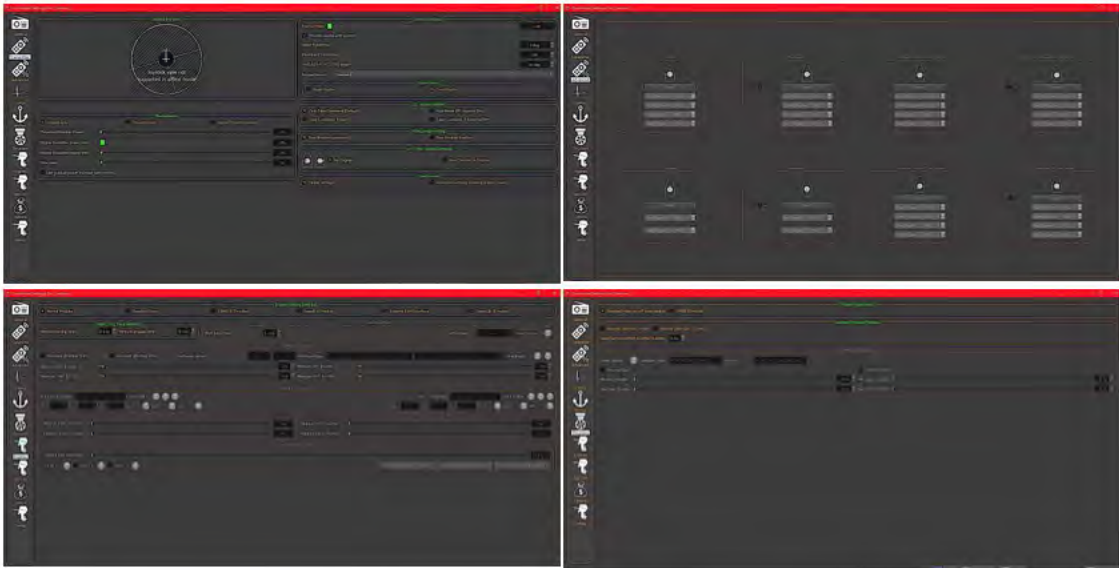
I've also come to like how invisible the Dockmate installation is, with only a master power switch and the charging pad showing at the helm. I had wished for a helm display to duplicate the receiver's LEDs so that I could confirm received commands, but as I've used it more I've gained more confidence it will just work.

## Configuration Options





## Configuration Options



A Dockmate installer can customize nearly every aspect of the system's operation. Delays can be set for each function, throttle curves changed and –for Twist systems – the propulsion components used for each maneuver can be highly tuned. For instance, *Have Another Day's* torquey motors and big props mean that I can pretty easily spin the boat on differential thrust alone. So I asked that the joystick's twist motion be set up to put one engine in forward and one in reverse while not using any actual thruster power. By contrast, I visited one of Dockmate's single-engine demo boats with bow and stern thrusters where the twist motion only uses the thrusters. The range of configuration options makes me think that Dockmate can be tweaked to handle nearly any type of propulsion.

I've always looked at remotes as something that might be nice to have, but that I was okay without. But now that I've had the Dockmate installed on *Have Another Day* for a few months I don't want to give up my loaner system. I am reminded of the value nearly every time we maneuver the boat; while it may be a luxury, it sure is a helpful and confidence inspiring one.

### Similar Posts:



[Raymarine & Remote Knowledge, very interesting!](#)

January 11, 2007



[Garmin's wireless VHF mic, Simrad's too](#)

January 10, 2011



[CoolSaver, really smart fridge control?](#)

October 25, 2010




[Fusion Marine Stereo 700 series, holy mackerel!](#)

October 4, 2011

PREVIOUS STORY

Actisense NMEA 2000 cables & connectors, plus network design tips



**Ben Stein**

Publisher of Panbo.com, passionate marine electronics enthusiast, completed the Great Loop in 2017.

16 RESPONSES

[Comments 15](#) [Pingbacks 1](#)



**Ben Ellison** April 3, 2019 at 2:41 pm

I think Ben S was wise to focus his Dockmate review on what he has seen and experienced, but anyone Googling the company (like I did this morning) will probably discover that someone has mounted a very aggressive “Deceptive Marketing Exposed” campaign against them at <http://www.fakeremotes.com/dockfake>